

REPORT

Absalon Class,
Naval Flexible
Support Ships

Radical cost and time savings are achieved in the retrofit of the new series of Danish military support ships. This is the result of a change to the adaptable Roxtec sealing modules in cable and pipe transits onboard.



Unused modules in a Roxtec seal serve as spare capacity for the retrofit. This "future included" feature saves time and cost during installations.

The new Danish flexible support ships in the Absalon class start out as civilian ships at the Odense Steel Shipyard. They are then moved to the Korsøer and Frederikshavn Military Naval Bases for retrofit of military systems and equipment. This addition includes the routing of extensive amounts of new electrical cables and piping throughout different zones and hazardous areas onboard.



Roxtec for retrofit

The new ships use up to 2400 openings for cables and around 1200 openings for pipes. Environment protection include ABC warfare and EMC. Originally the openings were planned to be sealed with solid modules. On recommendation from Roxtec, the Danish Naval Material Command (SMK) became interested in using adaptable modules with Multidiameter™, the Roxtec technology based on sealing modules with removable layers, instead. This turned out to be a good idea.

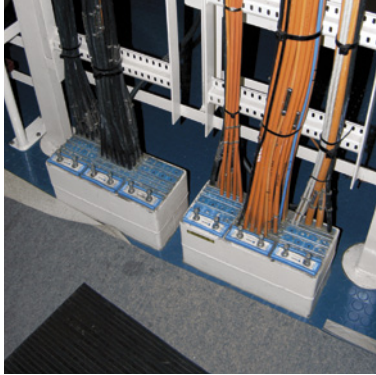
Thanks to the decision of the SMK, savings of up to 70 000 euros and significant time savings on each ship could be achieved. The features of the adaptable modules from Roxtec also serve as a long-term benefit.

Radical cost savings

The Roxtec solution means that the seals can be opened and reused again. The result is that retrofit is possible at any time, even during the lifetime voyages of the ship. This "future included" feature saves time and money for the Naval Bases and the Royal Danish Navy.

Roxtec team reports on site
– from the retrofit of the new Absalon class,
military support ships, Korsøer, Denmark

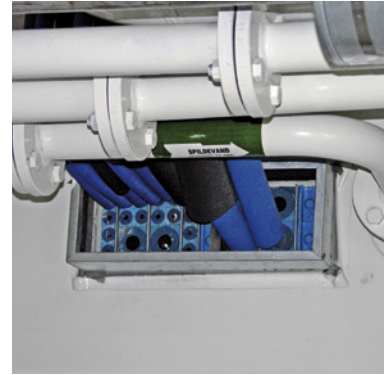
We Seal Your World™



Roxtec S frame transits come as single frames or multiple openings. Equipped with adaptable Roxtec modules, they seal cables and pipes of many sizes that pass through decks or bulkheads.



The Roxtec sealing system and the adaptable modules also handle pipes onboard the Absalon and Esbern Snare. Vibrations from pneumatic metal pipes can be reduced thanks to the dampening characteristics of the Roxtec material. Plastic pipes, used for freshwater onboard the ships, are sealed with Roxtec PPS and Roxtec PPSE.



Facts

Builder

Odense Steel Shipyard Ltd,
Denmark.

Retrofit Yards

Korsøer Naval Base, Denmark
and Frederikshavn Naval Base,
Denmark.

Equipment Specification

Danish Naval Material Command
(SMK), Copenhagen, Denmark.

Ships

Flexible Support ships L16 Absalon
and L17 Esbern Snare.
Length: 137 m, displacement 6300 t,
class: Absalon.

Application

In newbuild phase and retrofit:
Sealing of cables, metal pipes and
plastic pipes against hazards from
water and fire, including EMC seal-
ing and ABC warfare sealing.

Roxtec solutions

2400 openings for cables (hereof
approx. 600 EMC) and 1200 open-
ings for pipes (approx. 150 EMC)
using the following Roxtec prod-
ucts: S frame transits, R frame
transits, RS seals, CF 32 seals,
PPS and PPSE.

Reasons for Roxtec

- Adaptable and reusable sealing modules with Multidiameter™, the Roxtec technology based on modules with removable layers, that save up to 70 000 euros per ship.
- Future included capacity for retrofit additions.
- Significant time savings of up to 1 hour per individual installation.
- Local support.
- Certified protection
Fire protection A60
Water pressure 4 bar
ABC warfare.



Roxtec International AB
Box 540, SE-371 23 Karlskrona, SWEDEN
PHONE +46 455 36 67 00, FAX +46 455 820 12
EMAIL info@roxtec.com, www.roxtec.com