



NEW!

Roxtec SLFO/RI sleeves
– for easy retrofitting



The combination of the new Roxtec SLFO/RI sleeves and the Roxtec round seal solutions enables efficient upgrades of rigs and platforms. It ensures certified protection and helps you extend the lifetime of your investment. The sleeves are designed according to the needs for retrofit ability and continuous uptime. All flange or pipe

penetration issues can be handled on site with a minimum of items.

User-friendly and adaptable

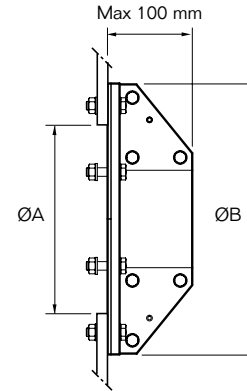
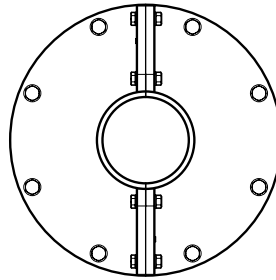
The sleeves are installed around existing pipes and attached by bolting. The Roxtec round seals are easily adaptable to pipes of different sizes.

Benefits

- Watertight
- Gas-tight
- Fire-proof
- Easy to install
- Vibration damping

We Seal Your World™

Roxtec SLFO/RI sleeves



Sleeve	For pipe dimension			Pipe flange EN1092-1		Aperture ØA (mm)	Sleeve flange ØB (mm)	Weight (kg)	For Roxtec seal type *	Art. No
	DN	NPS	ØOD (mm)	Max PN	ØOD (mm)					
SLFO/RI 43	10	5/8"	17.2	100	100	151	215	4.2	RS 43	SLFORI0004321
SLFO/RI 50	15	1/2"	21.3	100	105	162	226	4.7	RS 50	SLFORI0005021
SLFO/RI 68	20	3/4"	26.9	100	130	182	246	5.4	RS 68	SLFORI0006821
SLFO/RI 75	25	1"	33.4	100	140	188	252	5.5	RS 75	SLFORI0007521
	32	1 1/4"	42.4	100	155	188	252	5.5	RS 75	
SLFO/RI 100	40	1 1/2"	48.3	100	170	253	317	9.5	RS 100	SLFORI0010021
	50	2"	60.3	100	195	253	317	9.5	RS 100	
SLFO/RI 125	65	2 1/2"	73	100	220	279	343	10.8	RS 125	SLFORI0012521
	80	3"	88.9	100	230	279	343	10.8	RS 125	
SLFO/RI 150	100	4"	114.3	100	235	303	367	11.6	RS 150	SLFORI0015021
SLFO/RI 200	125	5"	141.3	100	315	353	417	13.7	RS 200	SLFORI0020021
SLFO/RI 225	150	6"	168.3	100	355	386	450	16.8	RS 225	SLFORI0022521
SLFO/RI 300	200	8"	219.1	100	430	461	525	20.5	RS 300	SLFORI0030021
SLFO/RI 350	250	10"	273	100	505	511	575	23.0	RS 350	SLFORI0035021
SLFO/RI 400	300	12"	323.8	64	530	561	625	25.5	RS 400	SLFORI0040021
SLFO/RI 450	350	14"	355.6	64	600	611	675	27.9	RS 450	SLFORI0045021
SLFO/RI 500	400	16"	406.4	25	620	661	725	30.4	RS 500	SLFORI0050021
SLFO/RI 550	450	18"	457.2	25	670	711	775	32.9	RS 550	SLFORI0055021
SLFO/RI 600	500	20"	508	25	730	761	825	35.3	RS 600	SLFORI0060021

* Roxtec RS seals in acid proof stainless steel.

- For information about other sleeve sizes, please contact your local Roxtec representative.
- For more technical information, please see www.roxtec.com/products



Roxtec International AB
 Box 540, 371 23 Karlskrona, SWEDEN
 PHONE +46 455 36 67 00, FAX +46 455 820 12
 EMAIL info@roxtec.com, www.roxtec.com