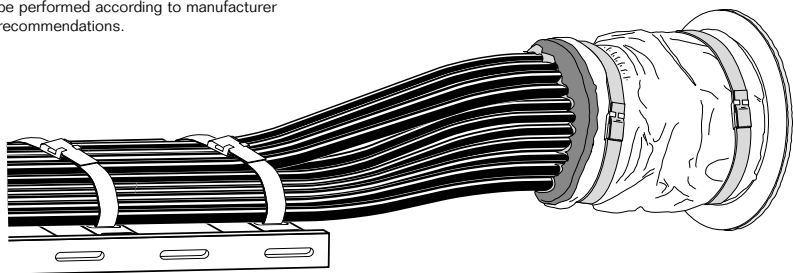


Safety information

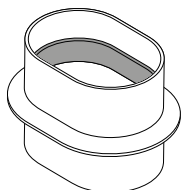
Roxtec recommends that all installations are performed without facility operation. Follow national regulations and installation codes. Any action affecting the routed service should be performed according to manufacturer recommendations.



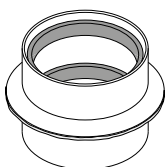
Installation instructions GK Multi-cable fire collar



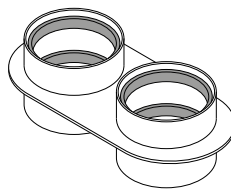
GK MC FC sleeves



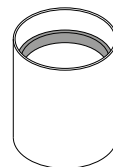
GK MC FC oval sleeve



GK MC FC round sleeve

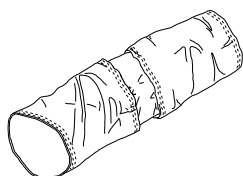


GK MC FC double sleeve

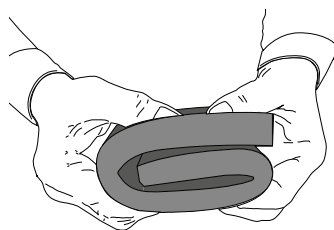


GK MC FC sleeve without flange

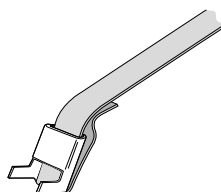
GK MC FC kit



Fiberglass cloth



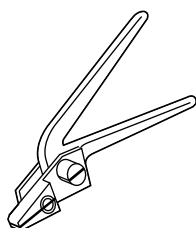
Sealing strip



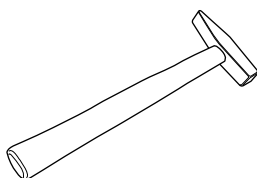
Straps

Tools needed

Not included



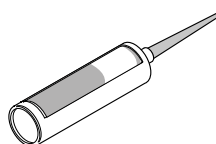
GK tightening tool
Article number: GK000000101400



Hammer

Smoke seal

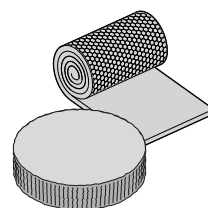
Not included



Roxtec fire sealant
Article number: 108279

Insulation

Not included



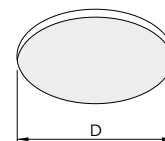
Insulation sheet

Aperture sizes for the GK Multi-cable fire collar with flange

GK MC FC round

Measures in millimeters (mm)

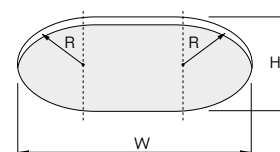
Size	Article	Aperture diameter D	Fits kit	
			Size	Article
GK MC FC 89 FL PRIMED	182267	92–109	GK MC FC 89 KIT	182158
GK MC FC 127 FL PRIMED	182269	130–147	GK MC FC 127 KIT	182159
GK MC FC 140 FL PRIMED	182271	143–160	GK MC FC 140 KIT	182160
GK MC FC 168 FL PRIMED	182291	172–189	GK MC FC 168 KIT	182162
GK MC FC 219 FL PRIMED	182274	222–239	GK MC FC 219 KIT	182163
GK MC FC 244 FL PRIMED	182276	247–264	GK MC FC 244 KIT	182164



GK MC FC oval

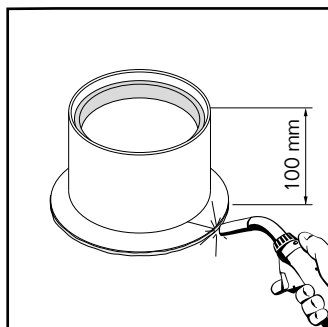
Measures in millimeters (mm)

Size	Article	Aperture WxH			Fits kit	
		Width W	Height H	Radius R	Size	Article
GK MC FC 200x150 FL PRIMED	182278	203-220	153-170	77-85	GK MC FC 200x150 KIT	182168
GK MC FC 350x168 FL PRIMED	182280	353-370	172-189	86-94	GK MC FC 350x168 KIT	182165
GK MC FC 450x170 FL PRIMED	182282	453-470	173-190	87-95	GK MC FC 450x170 KIT	182166
GK MC FC 550x170 FL PRIMED	182284	553-570	173-190	87-95	GK MC FC 550x170 KIT	182167

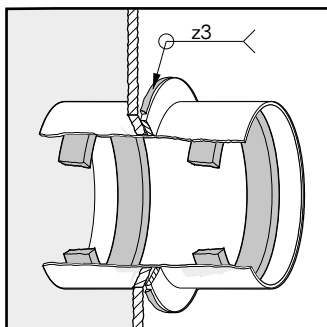


Installation of sleeve with flange

Make aperture according to table



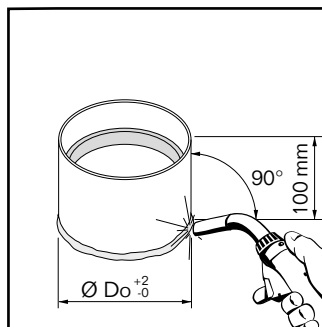
Apply a continuous gas-tight weld all around.



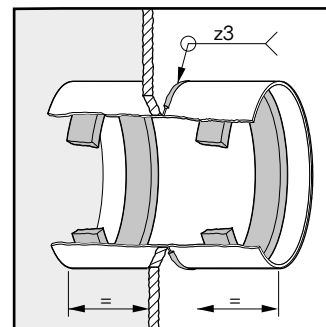
Max heat input 1.5 KJ/mm.

Installation of sleeve without flange

Make aperture according to outer diameter (Do)

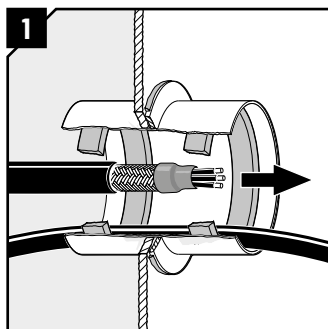


Center the sleeve and apply a continuous gas-tight weld all around.

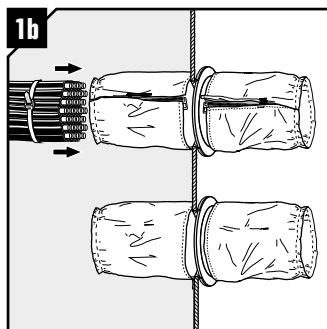


Max heat input 1.5 KJ/mm.

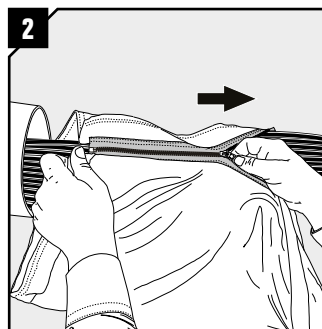
Installation guide for GK Multi-cable fire collar system



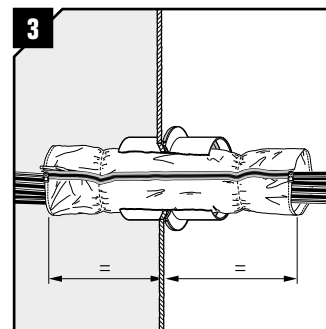
Route the cables. Do not damage the intumescent material.



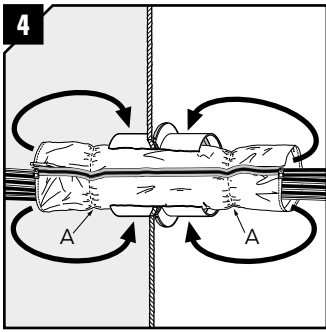
When the cable density is high or a non-openable fiberglass cloth is used, mount the fiberglass cloth before routing the cables.



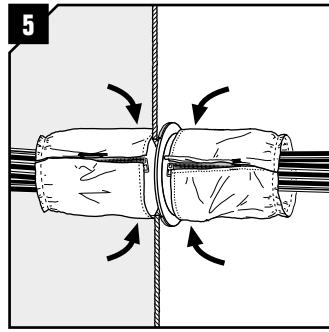
Open the zipper on the fiberglass cloth. Wrap the cloth around the cables with the bright side outwards. Close the zipper.



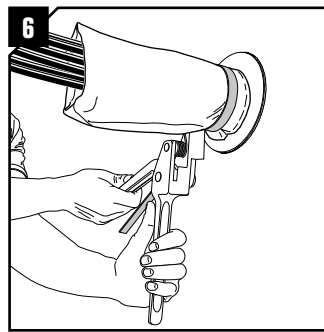
Pull the fiberglass cloth through the sleeve and make sure it is centered.



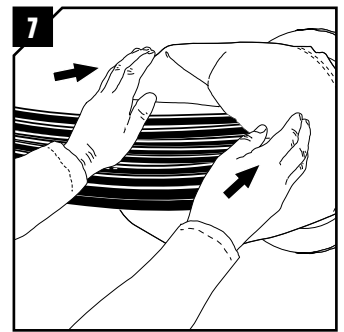
4 Fold back the glass fiberglass cloth at the seam (A) on both sides.



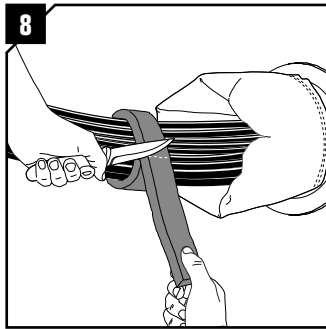
5 The ends of the fiberglass cloth mounted onto the sleeve.



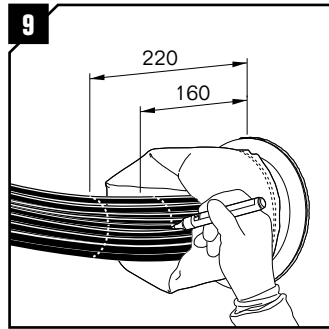
6 Secure both ends with a strap. GK tightening tool is available.



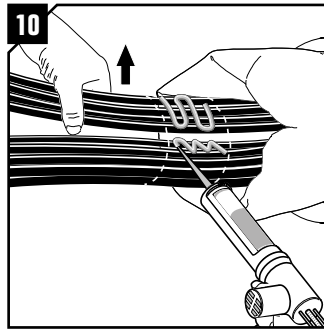
7 Move the cloth a bit to expose the sealing area of the cables.



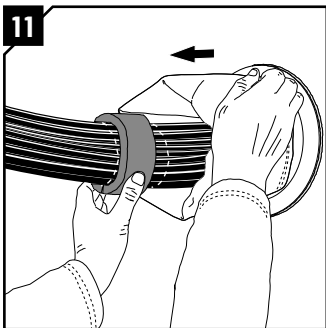
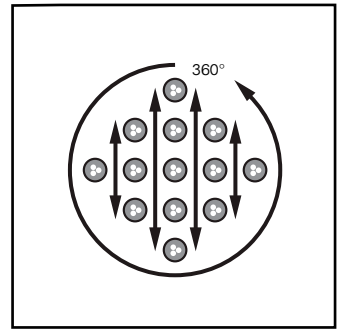
8 Fold the sealing strip around the cable bundle and cut two pieces, one for each side of the transit.



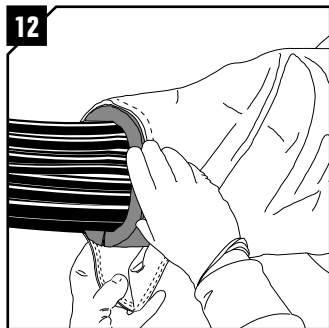
9 Make two marks at approximately 220 mm and 160 mm from the structure.



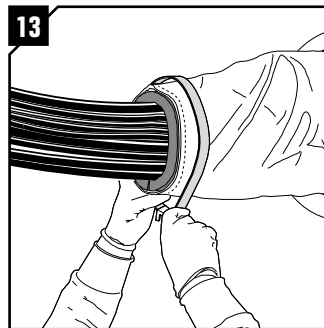
10 Apply sealant thoroughly between all the cables between the marks. Make sure there are no gaps so that the smoke cannot pass through once the bundle is joined.



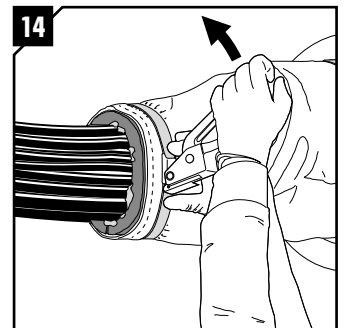
11 Fold the sealing strip around the bundle and over the sealant. Make sure there are no gaps in the joint.



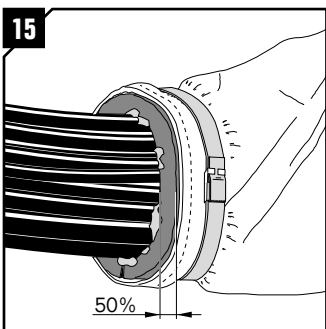
12 Pull back the fiberglass cloth flush to the sealing strip. If necessary, fold the fiberglass cloth excess material for a tight fit.



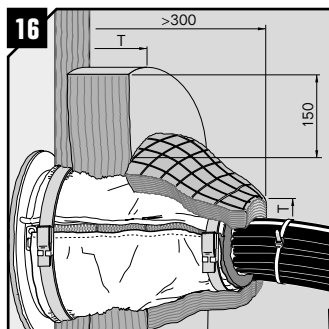
13 Put a strap at the center of the sealing strip.



14 Tighten the strap with a suitable tool. The compression is complete when the sealing strip is compressed by 50%.



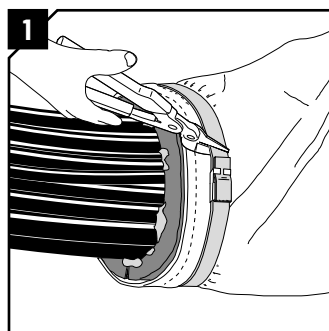
15 Make sure sealant is squeezed out and that there are no gaps in the bundle or at the sealing strip.



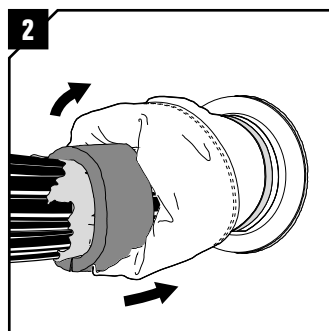
16 The installation is complete when the transit is insulated in line with type approvals using A-60 class insulation thickness (T).

Disassembly and reinstallation

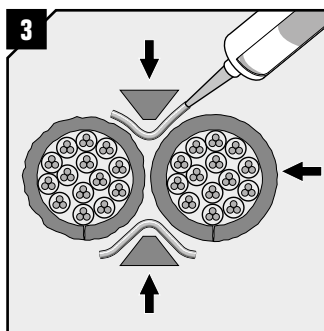
Material needed: 2 pieces of straps, 2 pieces of sealing strips and sealant.



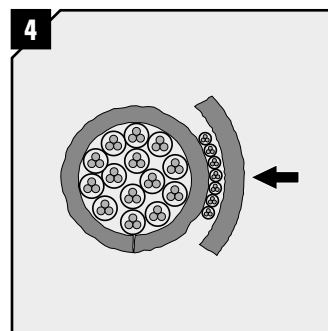
Cut the straps holding the cables.



Fold back the fiberglass cloth and add a new cable or bundle.

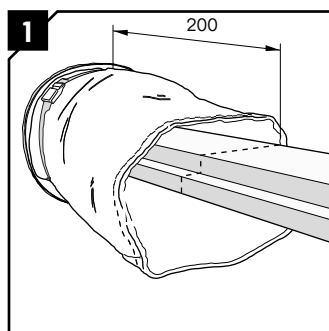


Make sure to fill any gap with sealing strips and sealant. Continue from step 12 on the previous page.

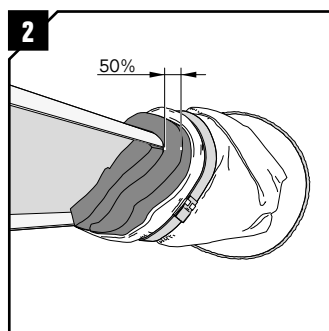


When a few small cables are added a piece of sealing strip can be placed over the new cables. Continue from step 12 on the previous page.

GK MC FC and busbars

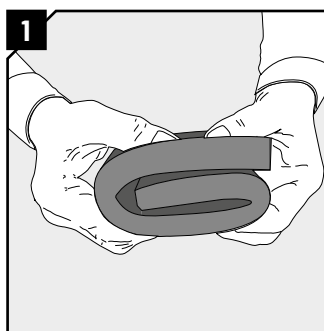


Apply the strip around the busbar about 200 mm from the structure. Cavities are filled with shorter pieces of strips. Fold the fiberglass cloth excess material for a tight fit.

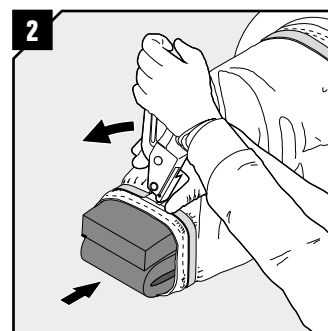


Put a sealing strip at the center of the sealing strip. Tighten the strap with a suitable tool. The compression is complete when the sealing strip is compressed by 50%.

GK MC FC without cables



Cut a 300 mm long piece of sealing strip and fold it two times.



Insert the sealing strip and fold the cloth for a tight fit. Put a strap at the center of the sealing strip and tighten the strap. The compression is complete when the sealing strip is compressed by 50%.

Note

- The recommended maximum cable density is 67% of the inner diameter of the intumescent material.
- Make sure not to damage the fiberglass cloth.
- The weight of the cables must be supported on both sides of the GK Multi-cable fire collar.
- Approvals or certificates may include amendments or limitations related to this application.
- The latest version of this and related documents are found at roxtec.com.

DISCLAIMER

"The Roxtec cable entry sealing system ("the Roxtec system") is a modular-based system of sealing products consisting of different components. Each and every one of the components is necessary for the best performance of the Roxtec system. The Roxtec system has been certified to resist a number of different hazards. Any such certification, and the ability of the Roxtec system to resist such hazards, is dependent on all components that are installed as a part of the Roxtec system. Thus, the certification is not valid and does not apply unless all components installed as part of the Roxtec system are manufactured by or under license from Roxtec ("authorized manufacturer"). Roxtec gives no performance guarantee with respect to the Roxtec system, unless (i) all components installed as part of the Roxtec system are manufactured by an authorized manufacturer and (ii) the purchaser is in compliance with (a), and (b), below.

(a) During storage, the Roxtec system or part thereof, shall be kept indoors in its original packaging at room temperature.

(b) Installation shall be carried out in accordance with Roxtec installation instructions in effect from time to time.

The product information provided by Roxtec does not release the purchaser of the

Roxtec system, or part thereof, from the obligation to independently determine the suitability of the products for the intended process, installation and/or use. Roxtec gives no guarantee for the Roxtec system or any part thereof and assumes no liability for any loss or damage whatsoever, whether direct, indirect, consequential, loss of profit or otherwise, occurred or caused by the Roxtec systems or installations containing components not manufactured by an authorized manufacturer and/or occurred or caused by the use of the Roxtec system in a manner or for an application other than for which the Roxtec system was designed or intended.

Roxtec expressly excludes any implied warranties of merchantability and fitness for a particular purpose and all other express or implied representations and warranties provided by statute or common law. User determines suitability of the Roxtec system for intended use and assumes all risk and liability in connection therewith. In no event shall Roxtec be liable for indirect, consequential, punitive, special, exemplary or incidental damages or losses."



Manufacturer:

Roxtec International AB
Box 540, 371 23 Karlskrona, SWEDEN
PHONE +46 455 36 67 00, FAX +46 455 820 12
EMAIL info@roxtec.com, www.roxtec.com