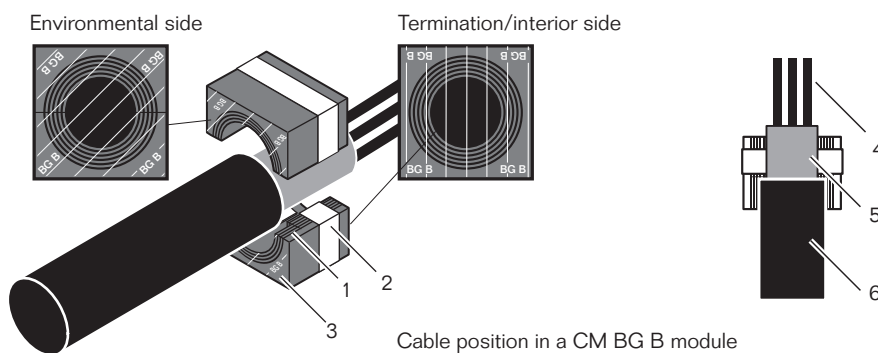


Roxtec CM BG™ B module

Integrated environmental sealing system for bonding and grounding applications. For use with armored/shielded jacketed cables including smooth and corrugated cables such as interlocked and continuous welded metal clad cables or wired and braided cables. For approvals, see www.roxtec.com.

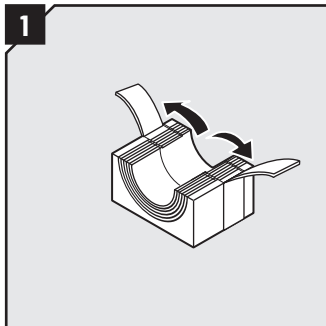


Installation instructions Roxtec CM BG™ B modules

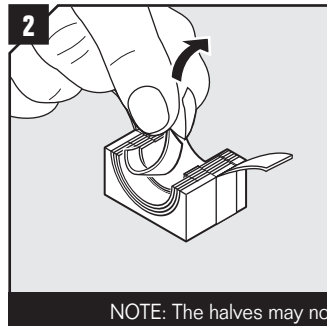


1. Multidiameter™ – adapts to cables and pipes of different sizes through removable layers
2. Bonding/grounding braid
3. Environmental side
4. Conductors
5. Cable armor/shield
6. Cable outer jacket

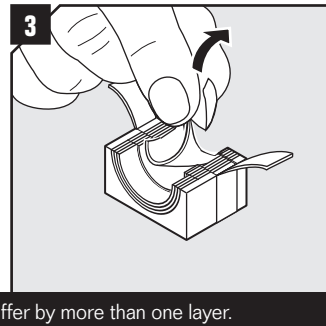
Installation



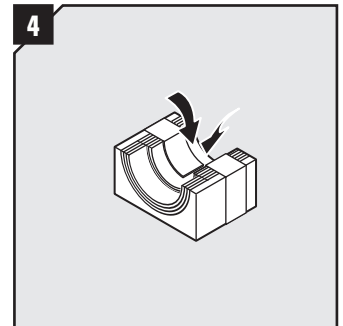
Remove the core and fold out the braid on modules that are to hold cables or pipes.



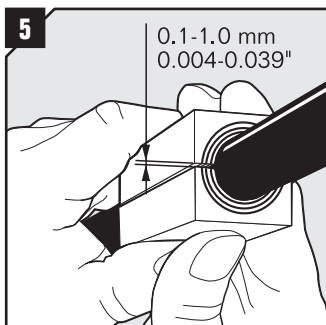
Adapt outer layers to cable/pipe on both module halves.



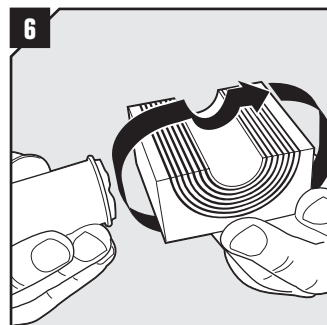
Adapt inner layers to cable screen/armor/pipe on both module halves.



Fold the braid tightly inside the module.



Achieve a 0.1-1.0 mm gap between the two halves when held against the cable or pipe.



Lubricate all modules for the frame thoroughly, both the inside and the outside surfaces. Avoid excess lubricant on the braid.

Sizing chart

Module	For cable/pipe diameter		Total braid cross-section/cable sq mm	Approx. Eqv. AWG
	a-b (mm)	a-b (in)		
CM 20w40 BG B	0+3.5-16.5	0+0.138-0.650	4.16*	11
CM 30w40 BG B	0+10.0-25.0	0+0.394-0.984	13.24	6
CM 40 10-32 BG B	0+9.5-32.5	0+0.374-1.280	21.04	4

* Per cable.

DISCLAIMER

"The Roxtec cable entry sealing system ("the Roxtec system") is a modular-based system of sealing products consisting of different components. Each and every one of the components is necessary for the best performance of the Roxtec system. The Roxtec system has been certified to resist a number of different hazards. Any such certification, and the ability of the Roxtec system to resist such hazards, is dependent on all components that are installed as a part of the Roxtec system. Thus, the certification is not valid and does not apply unless all components installed as part of the Roxtec system are manufactured by or under license from Roxtec ("authorized manufacturer"). Roxtec gives no performance guarantee with respect to the Roxtec system, unless (i) all components installed as part of the Roxtec system are manufactured by an authorized manufacturer and (ii) the purchaser is in compliance with (a), and (b), below.

(a) During storage, the Roxtec system or part thereof, shall be kept indoors in its original packaging at room temperature.

(b) Installation shall be carried out in accordance with Roxtec installation instructions in effect from time to time.

The product information provided by Roxtec does not release the purchaser of the

Roxtec system, or part thereof, from the obligation to independently determine the suitability of the products for the intended process, installation and/or use. Roxtec gives no guarantee for the Roxtec system or any part thereof and assumes no liability for any loss or damage whatsoever, whether direct, indirect, consequential, loss of profit or otherwise, occurred or caused by the Roxtec systems or installations containing components not manufactured by an authorized manufacturer and/or occurred or caused by the use of the Roxtec system in a manner or for an application other than for which the Roxtec system was designed or intended.

Roxtec expressly excludes any implied warranties of merchantability and fitness for a particular purpose and all other express or implied representations and warranties provided by statute or common law. User determines suitability of the Roxtec system for intended use and assumes all risk and liability in connection therewith. In no event shall Roxtec be liable for indirect, consequential, punitive, special, exemplary or incidental damages or losses."



Roxtec International AB
 Box 540, 371 23 Karlskrona, SWEDEN
 PHONE +46 455 36 67 00, FAX +46 455 820 12
 EMAIL info@roxtec.com, www.roxtec.com