

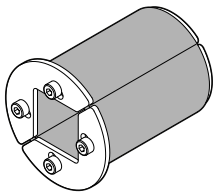
Safety information

Roxtec recommends that all installations are performed without facility operation. Follow national regulations and installation codes. Any action affecting the routed service should be performed according to manufacturer recommendations.

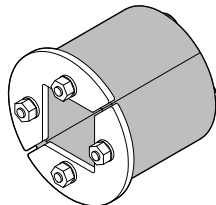


Installation instructions Roxtec R transit

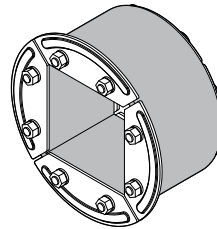
Components



Roxtec R 50 frame



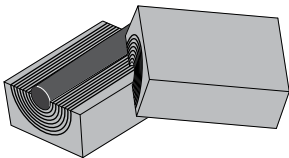
Roxtec R 70/75 frame



Roxtec R 100-200 frame



Roxtec Lubricant

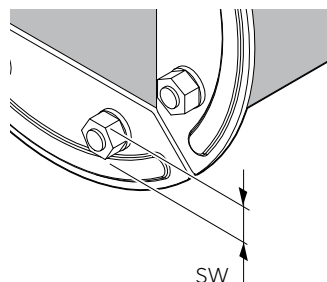
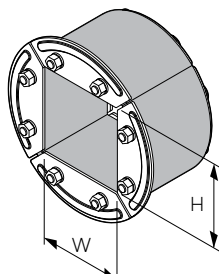
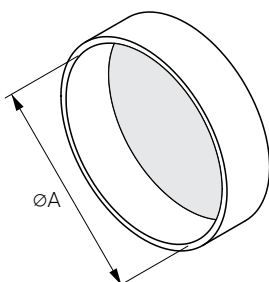


Roxtec RM sealing module
(not included)

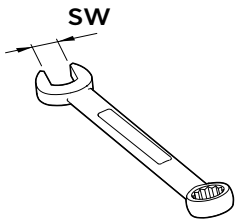
Technical data

Frame	Aperture A Ø (mm)	Packing space (HxW)	Tool size SW (mm)	Approx. torque* (Nm)
R 50	50-52	30x30	3	5-6
R 70	70-72	40x40	10	6-7
R 75	75-77	40x40	10	6-7
R 100	100-102	60x60	10	6-7
R 125	125-127	80x80	10	6-7
R 127	127-129	80x80	10	6-7
R 150	150-152	90x90	13	9-11
R 200	200-202	120x120	13	9-11

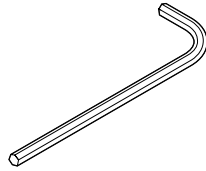
* The amount of torque needed to compress the seal depends on several things, e.g cable or pipe size, amount of used lubricant, aperture size or material in the cable sheath, etc.



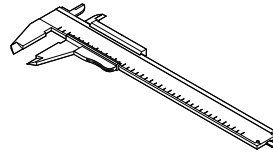
Tools



Wrench
(not included)

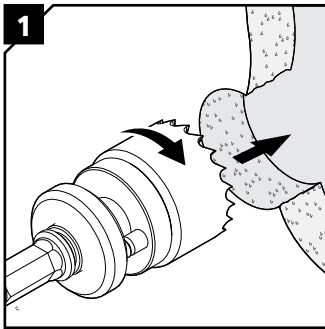


Allen key
(not included)



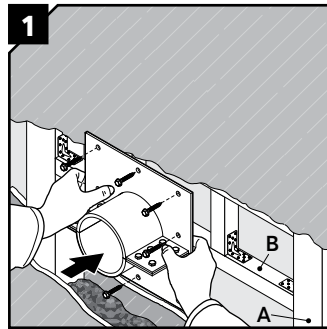
Caliper
(not included)

Installation in a core drilled hole



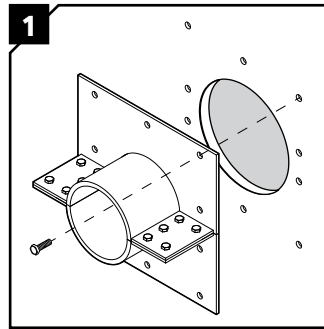
Use a hole saw with the appropriate diameter.

Installation on a gypsum structure



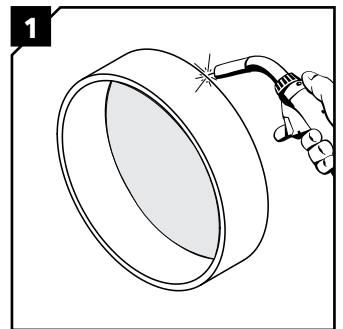
For gypsum or other non-load-bearing structures. Add additional aperture framing structure of steel or timber (B) to the existing structure (A) inside the wall. Attach the frame to the added structure with suitable fasteners.

Installation in a bolted in sleeve



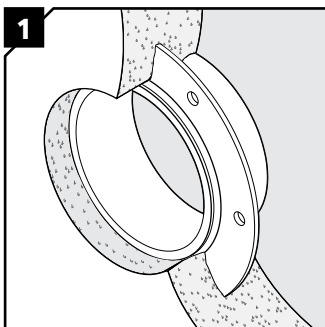
Attach the sleeve to the structure using suitable sealing method and suitable fasteners.

Installation in a welded in sleeve



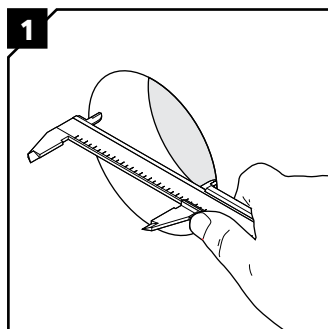
Weld the Roxtec sleeve to the structure. Welding guidelines are available at www.roxtec.com.

Installation in a cast in sleeve

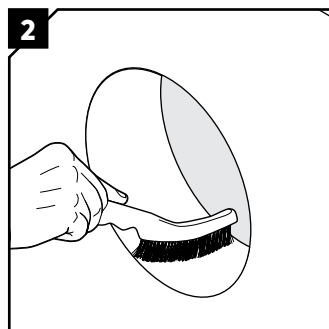


Cast the sleeve into a concrete wall.

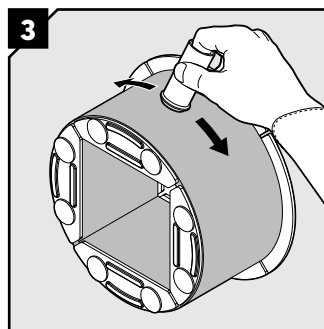
Installation R frame



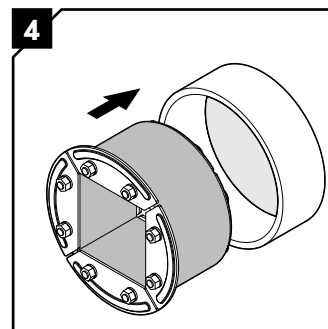
1 Make or verify an aperture according to the table on the first page.



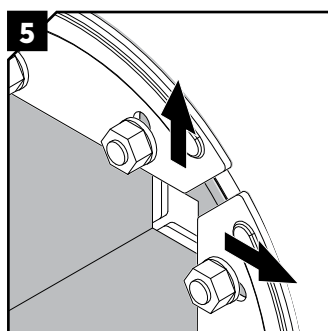
2 Clean the aperture.



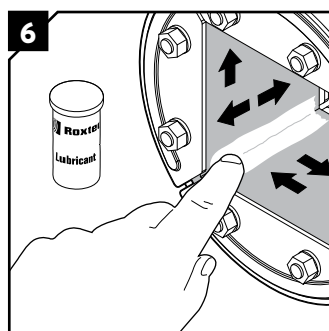
3 Lubricate the frame sparsely on the outside with Roxtec Lubricant.



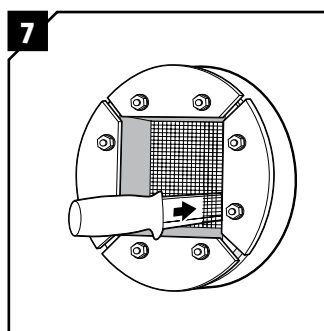
4 Insert the frame into the sleeve/hole.



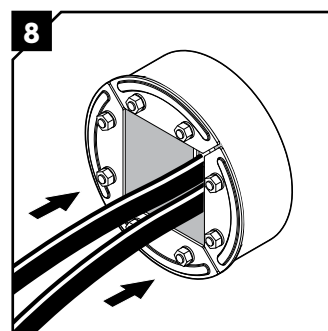
5 Push the front fittings to the sides.



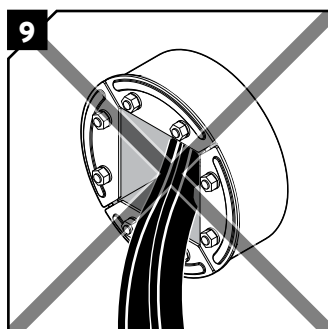
6 Lubricate the inside of the frame thoroughly, especially into the corners.



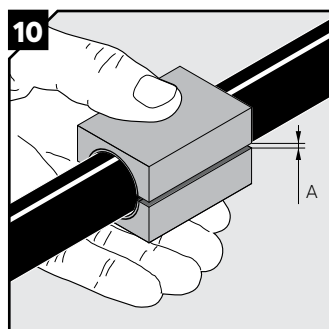
7 If applicable, make a hole in the net for cables or pipes.



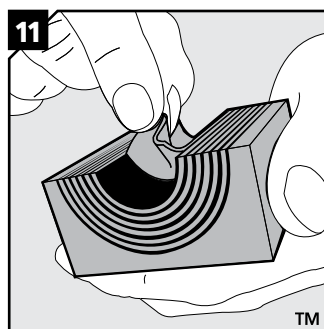
8 Pull the cables/pipes straight through the frame.



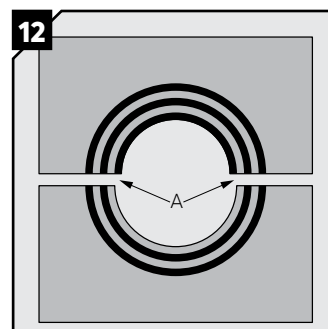
9 Not acceptable.



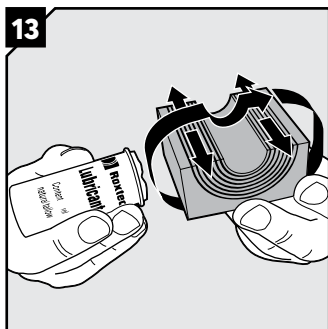
10 Achieve a 0.1-1.0 mm (A) gap between the two halves when held against the cable/pipe.



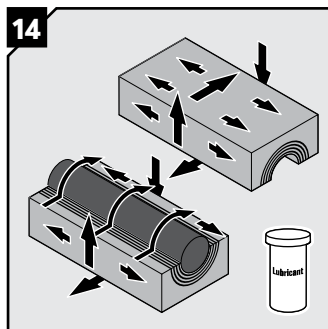
11 Adapt the modules by peeling off layers.



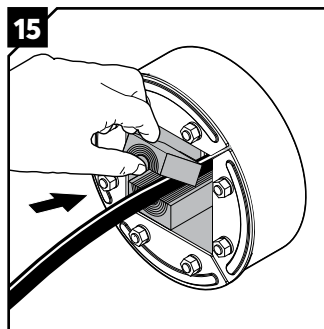
12 The number of layers may not differ (A) by more than one between the corresponding module halves.



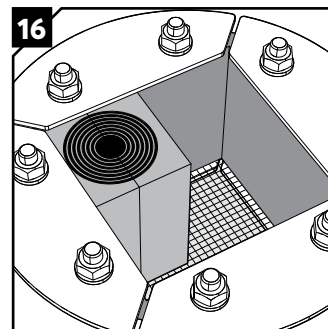
Lubricate all sealing surfaces on the modules.



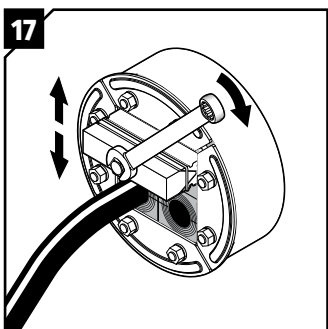
Lubricate the sealing surfaces of the spare modules. Do not remove the core.



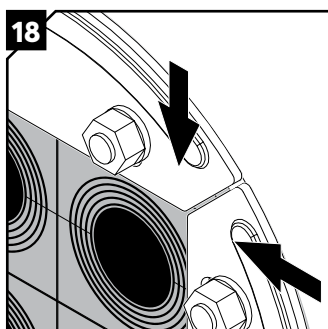
Insert the modules and cables/ pipes according to your packing plan.



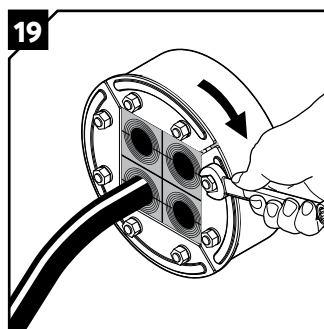
The net will simplify horizontal installations.



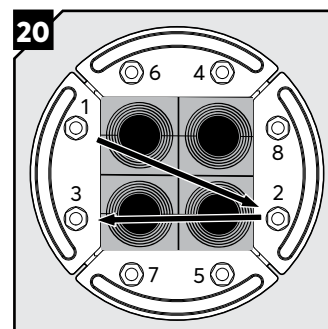
A Roxtec pre-compression tool can be used to make room for the final module row, if necessary.



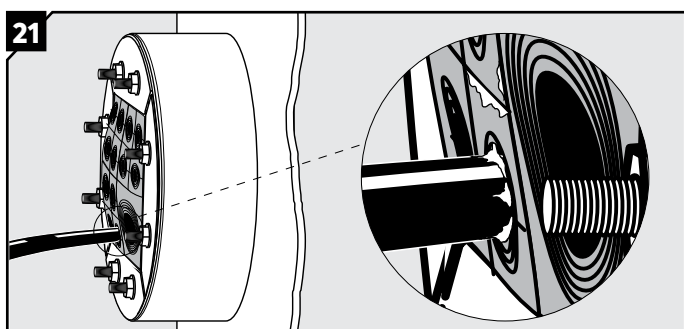
Push the front fittings back towards the center.



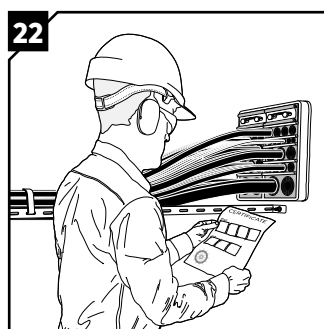
Tighten the nuts crosswise in small steps.



Example of a crosswise tightening pattern.

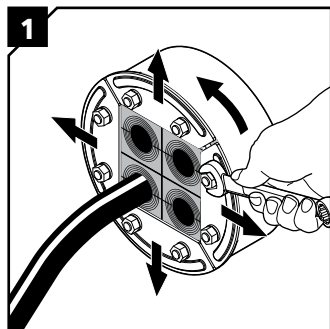


Signs of good compression are: The bolts are tightened similarly. Excessive lubricant is visible directly after installation. The rubber surfaces bulge and show convexity.

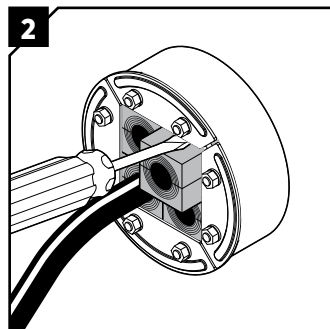


Make a final check! Different approvals or certificates may include amendments or limitations related to this application.

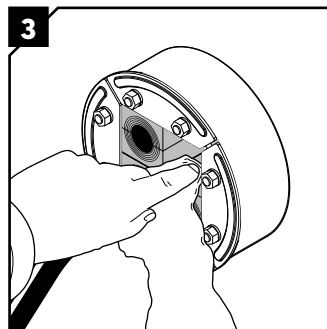
Disassembly and reinstallation



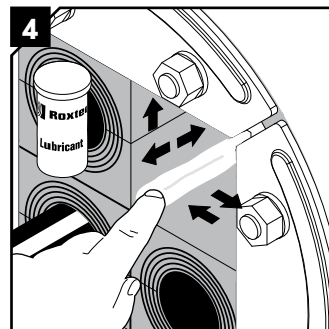
Untighten the nuts and push the front fittings to the sides.



Remove the modules. Use a flat tool if needed. Replace any damaged modules.

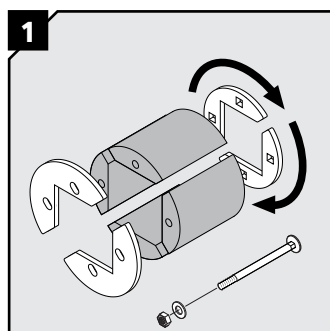


Clean the inside surfaces of the exposed packing space.

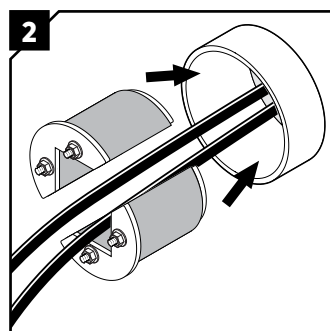


Lubricate the inside surfaces all around with Roxtec Lubricant, especially into the corners. Continue the reinstallation.

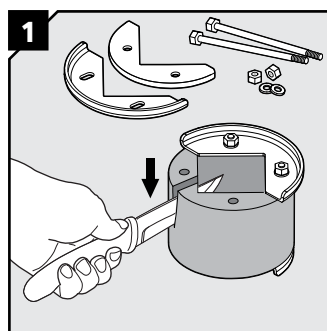
Pre-routed cables/pipes



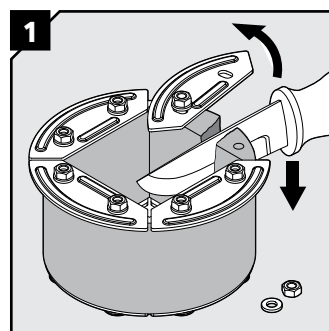
R70/75: If pipes or cables are pre-routed, disassemble the seal and orientate the fittings as shown.



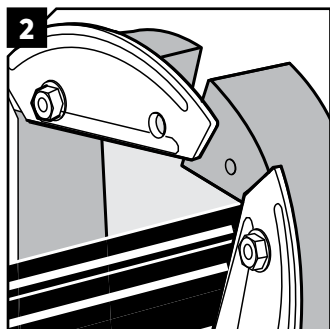
R70/75: Assemble the parts and insert the seal halves into the sleeve.



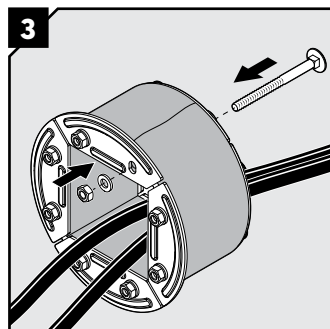
R100: Partly disassemble the seal and cut between screw hole and corner.



R125-R200: Partly disassemble the seal and cut between the screw holes.



R100 and R125-R200: Open the frame and wrap it around the cables.



R100 and R125-R200: Reassemble the frame around the cables. Continue the reinstallation.

Note

- For optimum reliability, wait 24 hours or longer after installation before exposing the cables/pipes to strain or pressure.
- To be used with: RM modules.
- Cables/pipes shall be parallel to the sleeve/aperture.
- Cable/pipe with a considerable weight needs to be supported to prevent damage or subsidence to the seal.
- Guidelines for sleeve attachment are available at roxtec.com.
- Approvals or certificates may include amendments or limitations related to this application.
- The latest version of this and related documents are found at roxtec.com.

DISCLAIMER

"The Roxtec cable entry sealing system ("the Roxtec system") is a modular-based system of sealing products consisting of different components. Each and every one of the components is necessary for the best performance of the Roxtec system. The Roxtec system has been certified to resist a number of different hazards. Any such certification, and the ability of the Roxtec system to resist such hazards, is dependent on all components that are installed as a part of the Roxtec system. Thus, the certification is not valid and does not apply unless all components installed as part of the Roxtec system are manufactured by or under license from Roxtec ("authorized manufacturer"). Roxtec gives no performance guarantee with respect to the Roxtec system, unless (I) all components installed as part of the Roxtec system are manufactured by an authorized manufacturer and (II) the purchaser is in compliance with (a), and (b), below.

(a) During storage, the Roxtec system or part thereof, shall be kept indoors in its original packaging at room temperature.

(b) Installation shall be carried out in accordance with Roxtec installation instructions in effect from time to time.

The product information provided by Roxtec does not release the purchaser of the Roxtec system, or part thereof, from the obligation to independently determine the suitability of the products for the intended process, installation and/or use.

Roxtec gives no guarantee for the Roxtec system or any part thereof and assumes no liability for any loss or damage whatsoever, whether direct, indirect, consequential, loss of profit or otherwise, occurred or caused by the Roxtec systems or installations containing components not manufactured by an authorized manufacturer and/or occurred or caused by the use of the Roxtec system in a manner or for an application other than for which the Roxtec system was designed or intended.

Roxtec expressly excludes any implied warranties of merchantability and fitness for a particular purpose and all other express or implied representations and warranties provided by statute or common law. User determines suitability of the Roxtec system for intended use and assumes all risk and liability in connection therewith. In no event shall Roxtec be liable for indirect, consequential, punitive, special, exemplary or incidental damages or losses."



Roxtec International AB, Box 540
371 23 Karlskrona, Sweden
+46 455 36 67 00, www.roxtec.com