



System No. W-L-3364
XHEZ.W-L-3364
Through-penetration Firestop Systems

[Page Bottom](#)

Design/System/Construction/Assembly Usage Disclaimer

- Authorities Having Jurisdiction should be consulted in all cases as to the particular requirements covering the installation and use of UL Certified products, equipment, system, devices, and materials.
- Authorities Having Jurisdiction should be consulted before construction.
- Fire resistance assemblies and products are developed by the design submitter and have been investigated by UL for compliance with applicable requirements. The published information cannot always address every construction nuance encountered in the field.
- When field issues arise, it is recommended the first contact for assistance be the technical service staff provided by the product manufacturer noted for the design. Users of fire resistance assemblies are advised to consult the general Guide Information for each product category and each group of assemblies. The Guide Information includes specifics concerning alternate materials and alternate methods of construction.
- Only products which bear UL's Mark are considered Certified.

XHEZ - Through-penetration Firestop Systems

XHEZ7 - Through-penetration Firestop Systems Certified for Canada

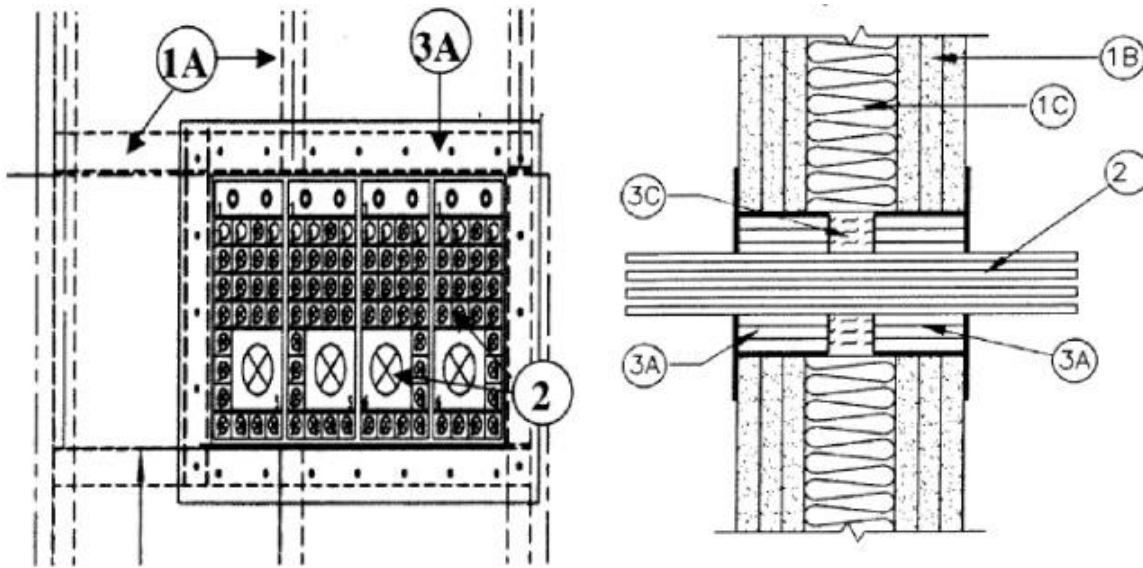
[See General Information for Through-penetration Firestop Systems](#)

[See General Information for Through-penetration Firestop Systems Certified for Canada](#)

System No. W-L-3364

October 21, 2014

ANSI/UL1479 (ASTM E814)	CAN/ULC S115
F Rating — 3 Hr	F Rating — 3 Hr
T Rating — 0 and 1 Hr (See Item 3)	FT Rating — 0 and 1 Hr (See Item 3)
	FH Rating — 3 Hr
	FTH Rating — 0 and 1 Hr (See Item 3)



1. Wall Assembly — The 3 h fire-rated gypsum board/stud wall assembly shall be constructed of the materials and in the manner specified in the individual U400, V400 or W400 Series Wall and Partition Designs in the UL Fire Resistance Directory and shall include the following construction features:

A. Steel Studs — Not Shown) - Channel-shaped, 3-5/8 in. (92 mm) deep and 1-5/8 in. ((41 mm) wide with 1/2 in. (13 mm) folded back flanges. Fabricated from min 20 MSG galv steel. Max stud spaced 16 in. (406 mm) OC. Additional framing members to be installed to form a rectangular box having dimensions which are max 1/4 in. (6 mm) greater than the width and height of the firestop device frame (Item 3A), excluding mounting flanges. The opening must be framed in such manner to meet structural requirements of U400 or V400 Series Wall and Partition Designs in the UL Fire Resistance Directory. Max dimension of framed opening is 21-1/16 in. (535 mm) wide by 11-5/8 in. (295 mm) high (G 8X4 Device).

B. Gypsum Board* — Three layers of min 1/2 in.(13 mm) thick, gypsum board, as specified in the individual Wall and Partition Design.

C. Batts and Blankets* — Mineral wool batt, completely filling the stud cavity. See **Batts and Blankets** (BZJZ) category for names of manufacturers.

2. Cables — Within the loading area for each firestop device module the cables may represent a 0 to 100 percent visual fill. Cables to be rigidly supported on both sides of wall assembly. Any combination of the following types and sizes of cables may be used:

A. Max 4/C No. 8 AWG copper conductor power cable with Crosslinked Polyolefin insulation and Neoprene jacket materials.

B. Max 19/C No. 14 AWG TC or TC-ER type copper conductor control power cable with Ethylene Propylene Rubber(EPR) insulation and Chlorinated Polyethylene (CPE) jacket materials.

C. Max 3/C No. 750 kcmil metal clad or Tech 90 type copper conductor power cable with XLP insulation and PVC jacket materials.

D. Max 3/C No. 500 kcmil MC type copper conductor power cable with Ethylene Propylene Rubber (EPR) insulation and PVC jacket materials.

E. Max 3/C No. 14 AWG MC type copper conductor power cable with XLP insulation and PVC jacket materials.

F. Max 2/C No. 14 AWG metal clad or Tech 90 type copper conductor control power cable with XLP insulation and PVC jacket materials.

G. Max 3/C No. 500 kcmil TC or TC-ER type copper conductor power cable with Okonite FRM Insulation and PVC jacket materials.

H. Max 3/C No. 500 MCM TC or TC-ER type copper conductor power cable with Polyethylene insulation and PVC jacket materials.

3. Firestop System — The firestop system shall consist of the following:

A. Firestop Devices* — Firestop devices each consist of a rectangular steel frame, multi diameter elastomeric sealing modules, steel stay plates and a compression unit consisting of a Wedge. The firestop devices shall be inserted into the framed opening on both sides of the wall assembly. The steel frame of each firestop device shall be secured to the steel stud framing of the wall assembly, through the gypsum board layers, by means of No. 8 by min 3 in. (76 mm) long self-drilling, self-tapping steel screws through the pre-drilled holes spaced max 3-1/2 in. (89 mm) OC in the device frame mounting flange. The rectangular opening(s) of each device frame shall be filled with multiple rows of multi diameter elastomeric sealing modules with a max of one cable in each sealing module. The sheets of the multi diameter sealing modules halves are removed one by one until a max gap of 0.04 in. (1 mm) is formed between the two module halves. When the number of sealing modules exceeds the number of cables, the solid cylindrical cores of the unpenetrated multi diameter sealing modules shall be left in place or "blank" (solid) sealing modules shall be used. During installation of the elastomeric sealing modules, thin steel stay plates shall be used to separate the rows of sealing modules and to retain the sealing modules within the steel frame. After installation of the modules, the bolts of the compression unit are tightened to form an effective seal around the through penetrants and insert modules. The firestop devices shall be installed in accordance with the accompanying installation instructions.

ROXTEC INTERNATIONAL AB — B-2x1, B-4x1, B-6x1, B-8x1, G-2x1, G-2x2, G-2x3, G-2x4, G-4x1, G-4x2, G-4x3, G-4x4, G-6x1, G-6x2, G-6x3, G-6x4, G-8x1, G-8x2, G-8x3, G-8x4, GH-2X1, GH-2X2, GH-2X3, GH-2X4, GH-4X1, GH-4X2, GH-4X3, GH-4X4, GH-6X1, GH-6X2, GH-6X3, GH-6X4, GH-8X1, GH-8X2, GH-8X3, GH-8X4, GHM-2x1, GHM-2X2, GHM-2X3, GHM-2X4, GHM-4x1, GHM-4X2, GHM-4X3, GHM-4X4, GHM-6x1, GHM-6X2, GHM-6X3, GHM-6X4, GHM-8x1, GHM-8X2, GHM-8X3, GHM-8X4, GH BG-2X1, GH BG-2X2, GH BG-2X3, GH BG-2X4, GH BG-4X1, GH BG-4X2, GH BG-4X3, GH BG-4X4, GH BG-6X1, GH BG-6X2, GH BG-6X3, GH BG-6X4, GH BG-8X1, GH BG-8X2, GH BG-8X3, GH BG-8X4, GHM BG-2X1, GHM BG-2X2, GHM BG-2X3, GHM BG-2X4, GHM BG-4X1, GHM BG-4X2, GHM BG-4X3, GHM BG-4X4, GHM BG-6X1, GHM BG-6X2, GHM BG-6X3, GHM BG-6X4, GHM BG-8X1, GHM BG-8X2, GHM BG-8X3, GHM BG-8X4, GOH-2x1, GOH-4x1, GOH-6x1, GOH-8x1, GKOH-2x1, GKOH-4x1, GKOH-6x1, GKOH-8x1, SF-2x1, SF-2x2, SF-2x3, SF-2x4, SF-4x1, SF-4x2, SF-4x3, SF-4x4, SF-6x1, SF-6x2, SF-6x3, SF-6x4, SF-8x1, SF-8x2, SF-8x3, SF-8x4

ROXTEC INC — B-2x1, B-4x1, B-6x1, B-8x1, G-2x1, G-2x2, G-2x3, G-2x4, G-4x1, G-4x2, G-4x3, G-4x4, G-6x1, G-6x2, G-6x3, G-6x4, G-8x1, G-8x2, G-8x3, G-8x4, GH-2X1, GH-2X2, GH-2X3, GH-2X4, GH-4X1, GH-4X2, GH-4X3, GH-4X4, GH-6X1, GH-6X2, GH-6X3, GH-6X4, GH-8X1, GH-8X2, GH-8X3, GH-8X4, GHM-2x1, GHM-2X2, GHM-2X3, GHM-2X4, GHM-4x1, GHM-4X2, GHM-4X3, GHM-4X4, GHM-6x1, GHM-6X2, GHM-6X3, GHM-6X4, GHM-8x1, GHM-8X2, GHM-8X3, GHM-8X4, GH BG-2X1, GH BG-2X2, GH BG-2X3, GH BG-2X4, GH BG-4X1, GH BG-4X2, GH BG-4X3, GH BG-4X4, GH BG-6X1, GH BG-6X2, GH BG-6X3, GH BG-6X4, GH BG-8X1, GH BG-8X2, GH BG-8X3, GH BG-8X4, GHM BG-2X1, GHM BG-2X2, GHM BG-2X3, GHM BG-2X4, GHM BG-4X1, GHM BG-4X2, GHM BG-4X3, GHM BG-4X4, GHM BG-6X1, GHM BG-6X2, GHM BG-6X3, GHM BG-6X4, GHM BG-8X1, GHM BG-8X2, GHM BG-8X3, GHM BG-8X4, GOH-2x1, GOH-4x1, GOH-6x1, GOH-8x1, GKOH-2x1, GKOH-4x1, GKOH-6x1, GKOH-8x1, SF-2x1, SF-2x2, SF-2x3, SF-2x4, SF-4x1, SF-4x2, SF-4x3, SF-4x4, SF-6x1, SF-6x2, SF-6x3, SF-6x4, SF-8x1, SF-8x2, SF-8x3, SF-8x4

Where RM ES B, RM PE B or RM BG, RM BG B, RM BG C elastomeric sealing modules are used. the T, FT and FTH Ratings are 0 Hr.

B. Silicone RTV Sealant — (Not Shown) - A min 1/4 in. (6 mm) diam bead of silicone RTV sealant shall be applied as a gasket between the device frame mounting flange and the gypsum board. The sealant bead shall be located between the edge of the opening and the line of fasteners around the entire perimeter of the framed opening.

C. Packing Material — Pieces of min 3 in. (76 mm) thick min 2.76 pcf (44 kg/m³) density mineral wool batt insulation cut to line four sides of through opening within wall cavity. Pieces cut to length and tightly friction-fit between framing of wall opening and cables.

*** Indicates such products shall bear the UL or cUL Certification Mark for jurisdictions employing the UL or cUL Certification (such as Canada), respectively.**

Last Updated on 2014-10-21

[Questions?](#)

[Print this page](#)

[Terms of Use](#)

[Page Top](#)

© 2014 UL LLC

When the UL Leaf Mark is on the product, or when the word "Environment" is included in the UL Mark, please search the [UL Environment database](#) for additional information regarding this product's certification.

The appearance of a company's name or product in this database does not in itself assure that products so identified have been manufactured under UL's Follow-Up Service. Only those products bearing the UL Mark should be considered to be Certified and covered under UL's Follow-Up Service. Always look for the Mark on the product.

UL permits the reproduction of the material contained in the Online Certification Directory subject to the following conditions: 1. The Guide

Information, Assemblies, Constructions, Designs, Systems, and/or Certifications (files) must be presented in their entirety and in a non-misleading manner, without any manipulation of the data (or drawings). 2. The statement "Reprinted from the Online Certifications Directory with permission from UL" must appear adjacent to the extracted material. In addition, the reprinted material must include a copyright notice in the following format: "© 2014 UL LLC".