



B15-MPC Cable Plug Installation instructions

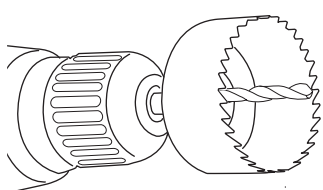
Application and validity:

The B15-MPC cable penetration consists of two B15-MPC MH module halves and a sealing compound. The cable penetration is certified for vertical and horizontal divisions of fire resistance classes B0 and B15, without gas or water tightness requirements. It is designed for cable bundles with a maximum filling rate of 66% and a maximum cable diameter of 20 mm. If a cable has already been laid through a suitable opening, the two halves of the B15-MPC MH module cable plug can be divided and mounted over the already installed cable. The installation is carried out on both sides and any remaining voids are filled with sealing compound. No additional fire protection insulation is required.

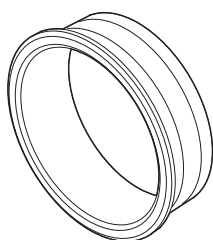
The cable plug type B15-MPC has been tested according to MSC.307(88)/ IMO 2010 FTP Code Part 3, Test for "A", "B" and "C" class divisions; 03.12.2010.

Current certificates must be taken into account and, where appropriate, the regulations of the flag state administrations must be observed. Applicable regulations and the state of the art must be followed by the installer. You can contact us at Tel. +49 40 65 73 98 0 or technic-germany@roxtec.com.

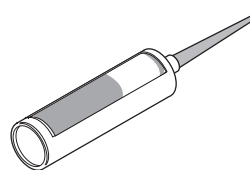
Tools and system components



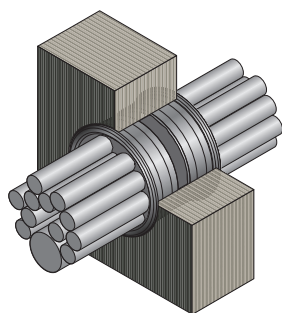
Power tool with hole cutter - for size see Table 1: ØD3 – (not included in the scope of supply)



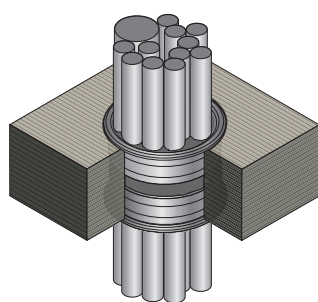
2x B15 MPC MH module halves - for sizes see Table 1 -



310ml sealing compound 'GK MC FC Sealant' or 'SIKA Firesil Marine N' (not included in the scope of supply)



Wall installation



Ceiling installation

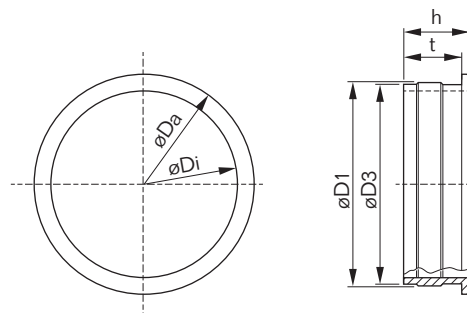
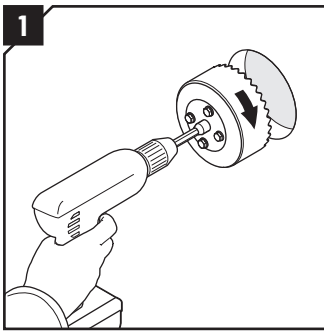
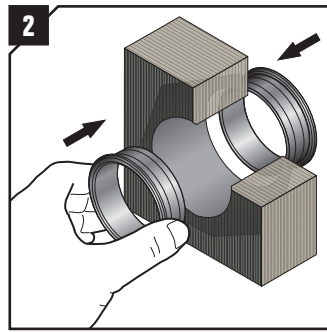


Table 1: B15-MPC sizes

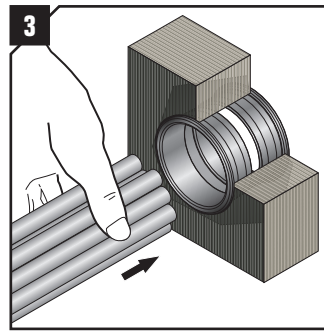
Art. name	ØDa	ØDi	ØD1	ØD3	h	d
BP15-MPC-28 MH	30.8	24.5	27.9	27 ± 0.5	17	15
BP15-MPC-41 MH	44.7	37.7	41.2	41 ± 0.5	17	15
BP15-MPC-52 MH	55.9	47.8	51.6	51 ± 0.5	17	15



1 Make a vertical hole with diameter ØD3 according to Table 1, taking care to remove any burr.

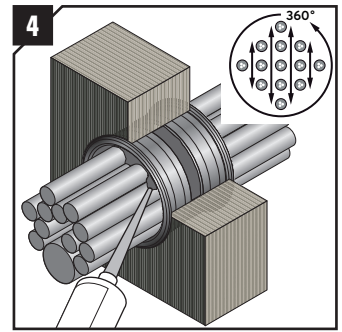


2 Insert a B15-MPC MH module half into the hole created on both sides, centering it in relation to the class division if necessary. For installation when cables are already fitted follow steps a to d.

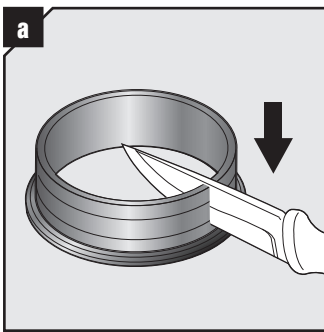


3 Insert the cable through the opening (3) and carefully fill the remaining voids between the cables with sealing compound(4).

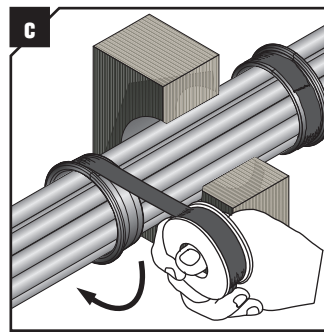
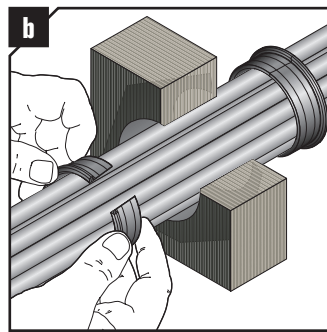
If the filling rate is low, the sealing compound may need to be provisionally secured to prevent loss (e.g. adhesive tape) to ensure sealing with sealing compound. The maximum permissible capacity is 66% based on the ratio of cable cross-section surfaces to the inner area of the B15-MPC cable penetration.



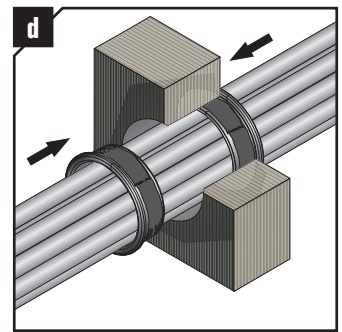
Installation when cables are already fitted



a If there are already cables in the opening, the B15-MPC MH module halves must be opened with a knife (a) and placed around the cables (b).



c The cut B15-MPC MH module halves are stabilised with two layers of PVC insulating tape (c) and then inserted into the class division from both sides (d). Continue installation according to step 4.



Reinstallation

The B15-MPC cable penetration can be removed or new cables can be added until the maximum capacity has been reached. It can be removed from the class division using a suitable tool. Care must be taken not to damage the cables. For a new sealing of the cables or the opening, always use new B15-MPC MH module halves on both sides (steps a to d).

Information about the guarantee and storage and installation instructions

Cable penetration B15 is manufactured by Roxtec GmbH ("Roxtec"). The B15 penetration has been certified for its resistance to various hazards and risks. Despite the appropriate certification, the resistance of the Cable penetration B15 to hazards and risks is dependent on proper installation according to the instructions provided by Roxtec. Roxtec and the member companies of the Roxtec Group accept no liability for defects in relation to the Cable penetration B15 resulting from improper storage, poor maintenance, incorrect use or deviation from the installation instructions issued by Roxtec or the Roxtec Group or otherwise incorrect installation or modifications and repairs made without the prior written consent of Roxtec. The B15 penetration must be stored indoors in its original packaging at room temperature. Installation must be carried out in accordance with the installation instructions issued by Roxtec or member

companies of the Roxtec Group that currently apply to the Cable penetration B15.

The product information provided by Roxtec or member companies of the Roxtec Group does not release the buyer or user of the Cable penetration B15 from his obligation to determine the suitability of the products for a specific process or a specific installation and/or use. In this regard, the buyer or user bears all risks and accepts all liability.

Manufacturer:



Roxtec GmbH
Neuer Höltingbaum 1-3, 22143 Hamburg, Germany
TEL + 49 40 657398-0, FAX + 49 40 657398-50/51
EMAIL info@de.roxtec.com, www.roxtec.com/de