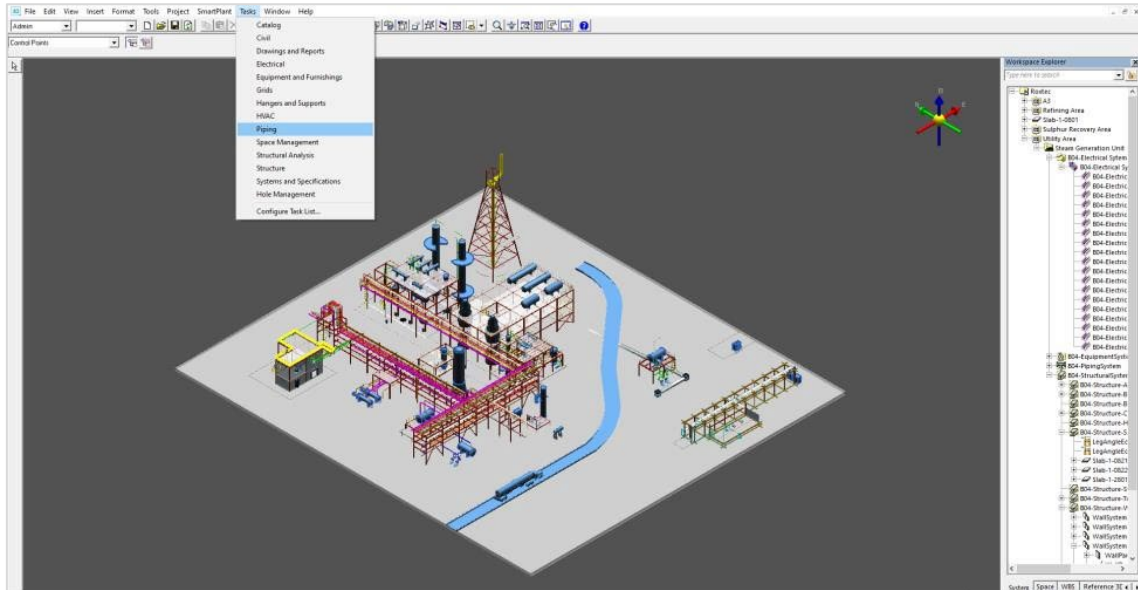




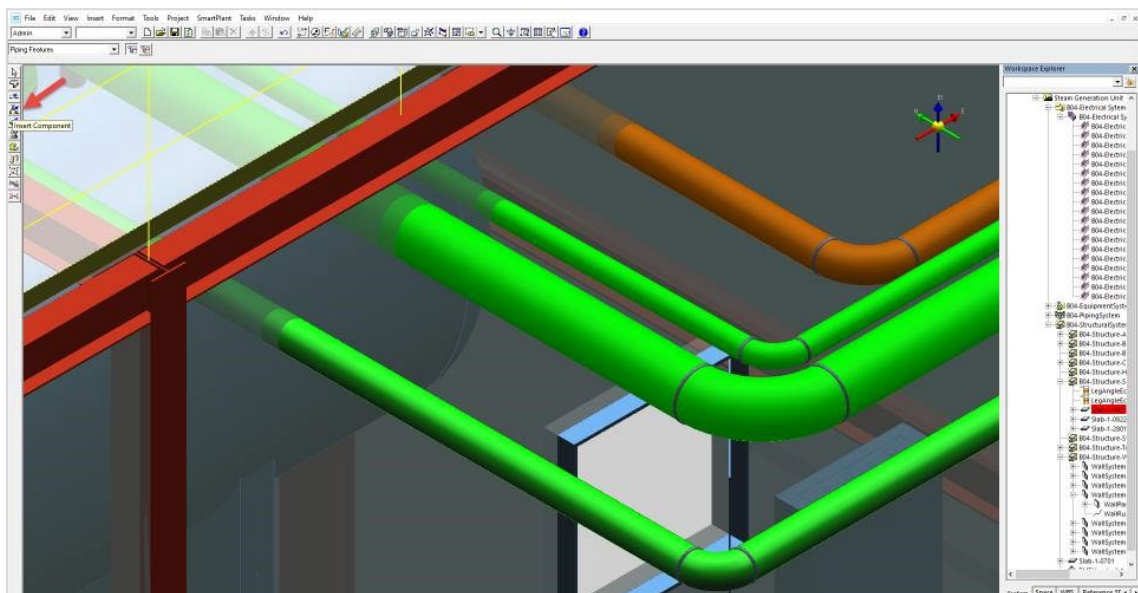
# Instructions for modeling Roxtec transits for cables and pipes in Intergraph Smart 3D

# Pipe penetrations

- 1 Choose “Tasks” in the menu bar in the upper edge of the program window. Then select “Piping” in the list that is presented.

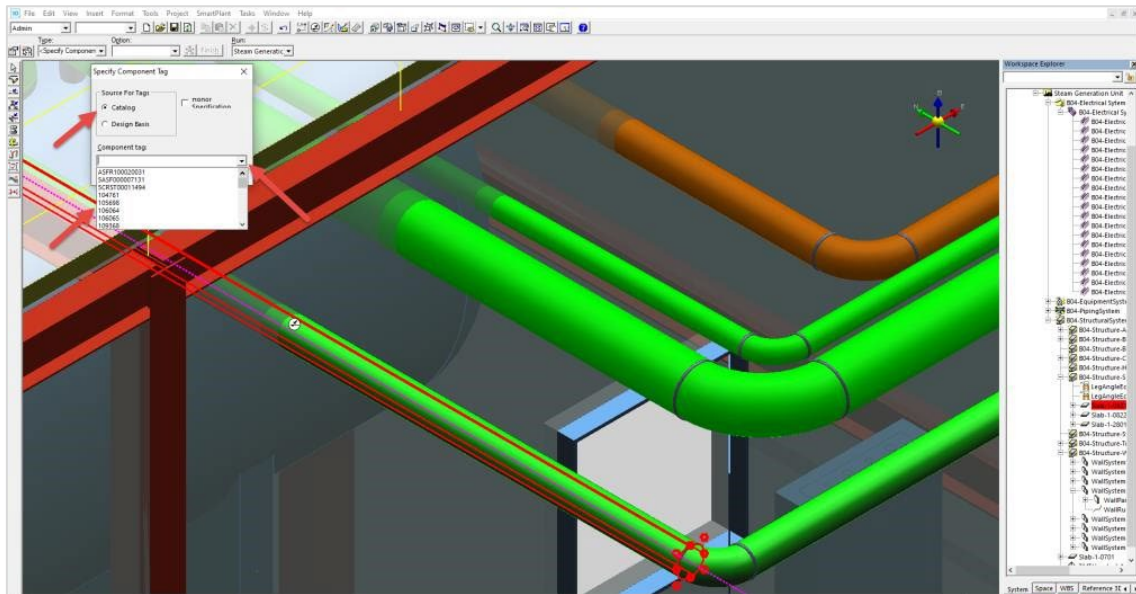


- 2 Go to the location in the model where the seal is to be placed. Then choose “Insert component” from the vertical bar to the left.

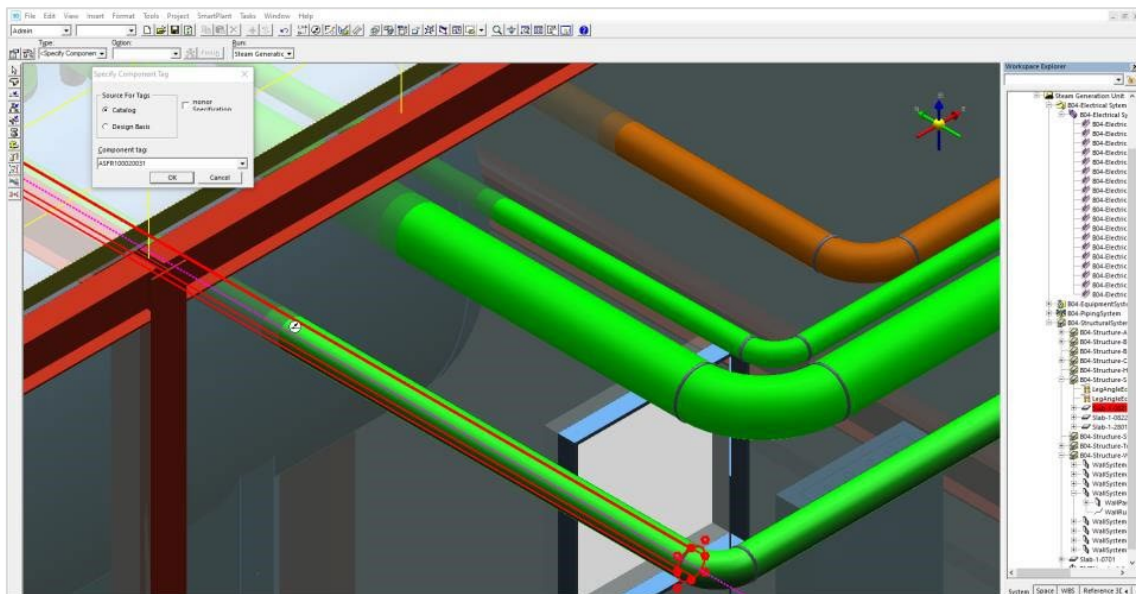




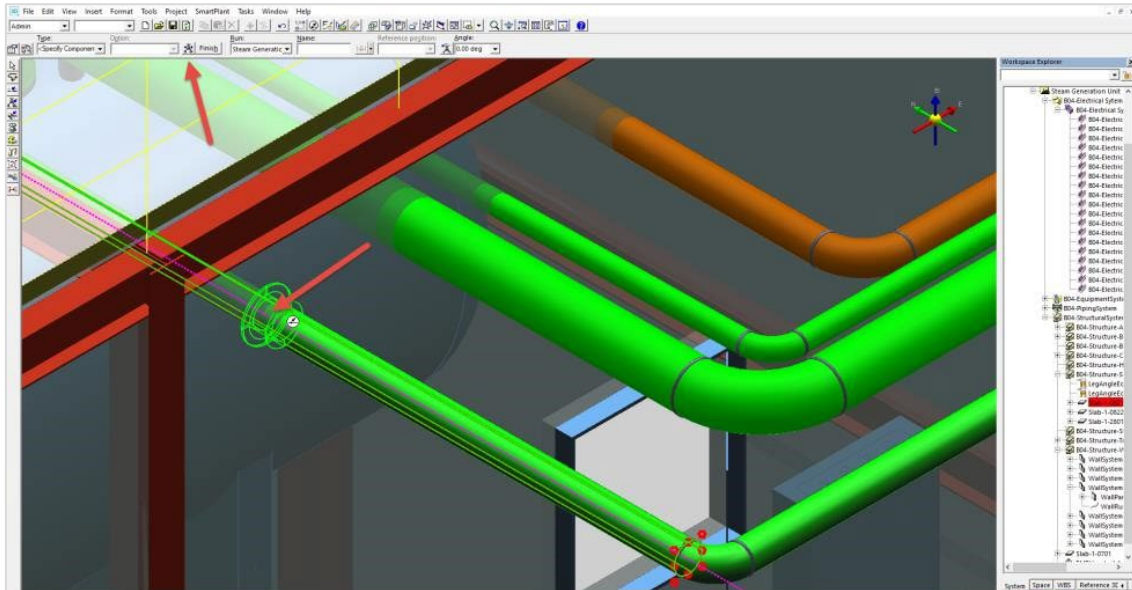
- 5 The “Specify Component Tag” action enables a list of article numbers (i.e. “tags”) that are suitable for the pipe size used. Only the articles which will fit the pipe size are shown.



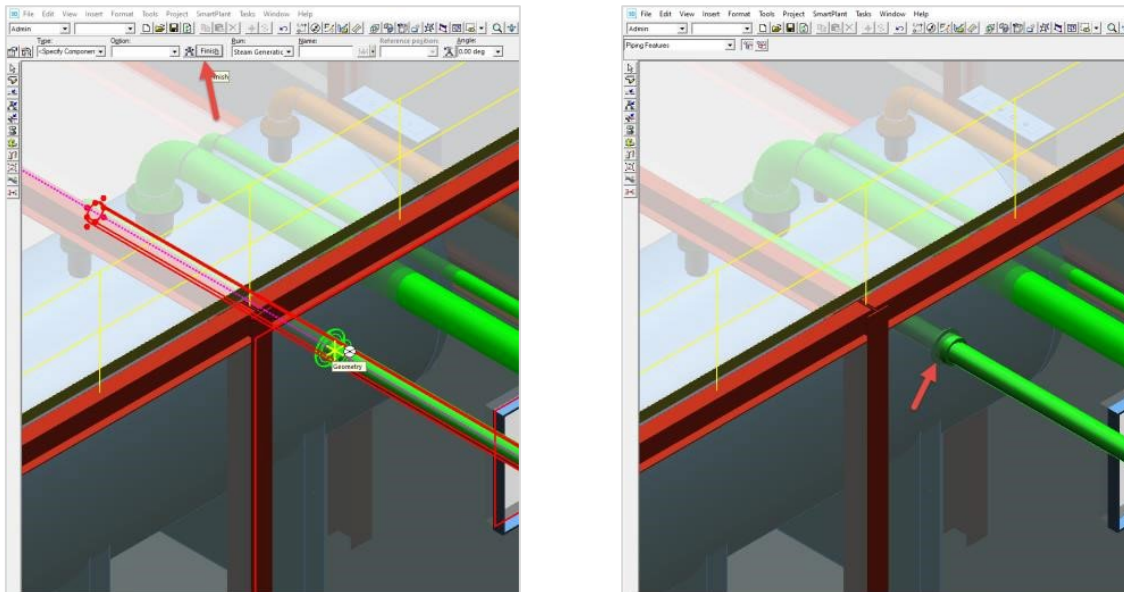
- 6 Select the preferred seal by choosing its article number from the catalog. Confirm by pressing “OK”.



- 7 The previous action enables a transparent preview of the seal. Choose the option “Enter Insertion Point” in the mid-left upper bar (next to “Finish”) to change the position of the seal.

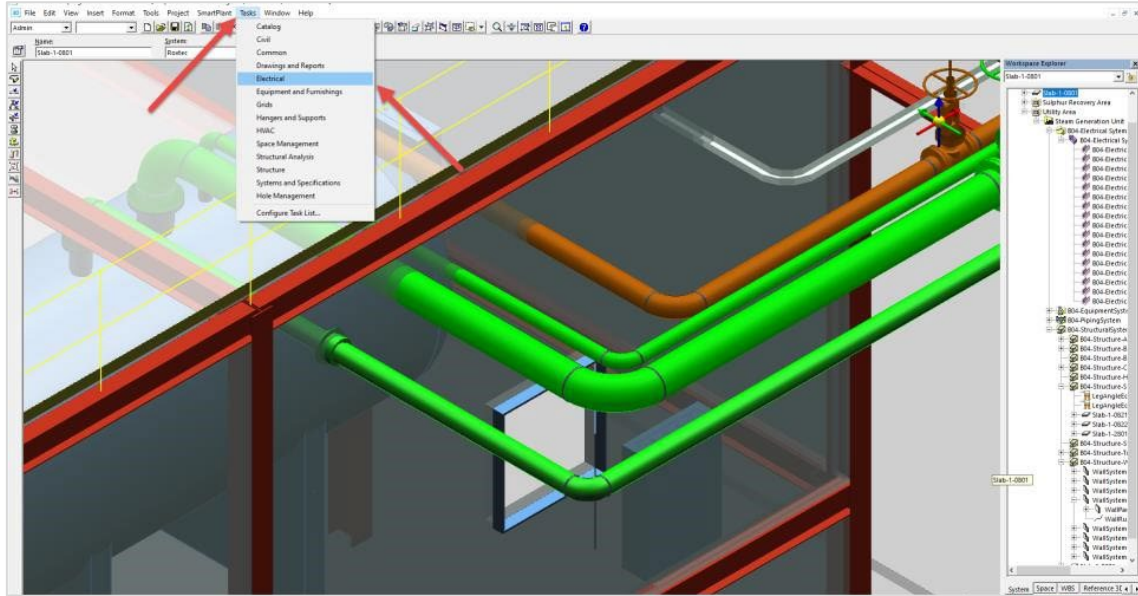


- 8 When the position is in line with the user preference, select “Finish” to complete the placement process. This action makes the transparent preview turn into the actual seal.

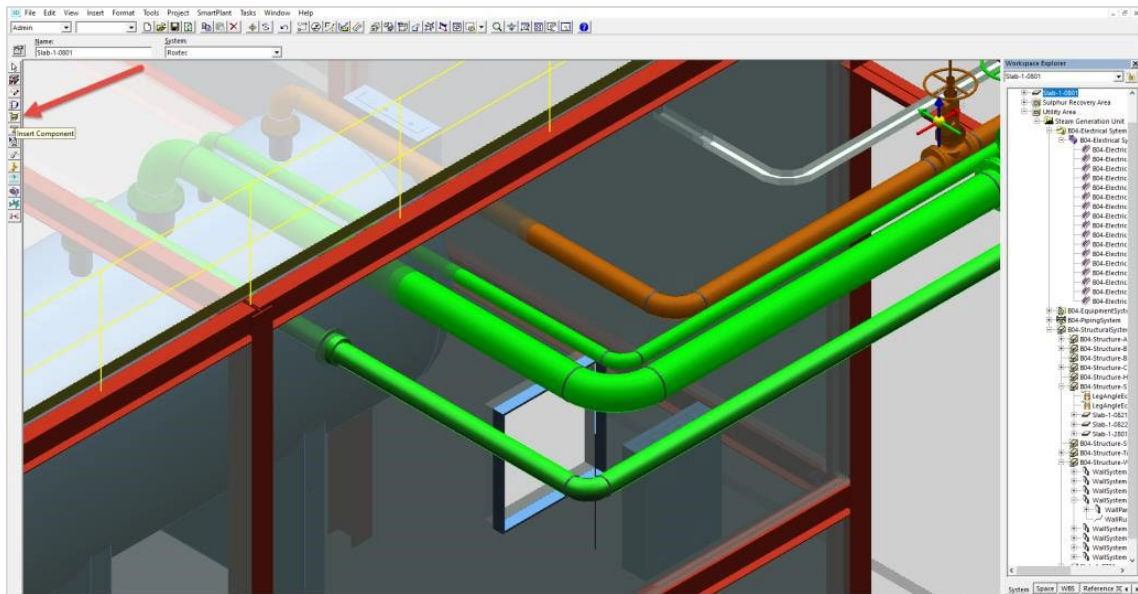


# Cable penetrations

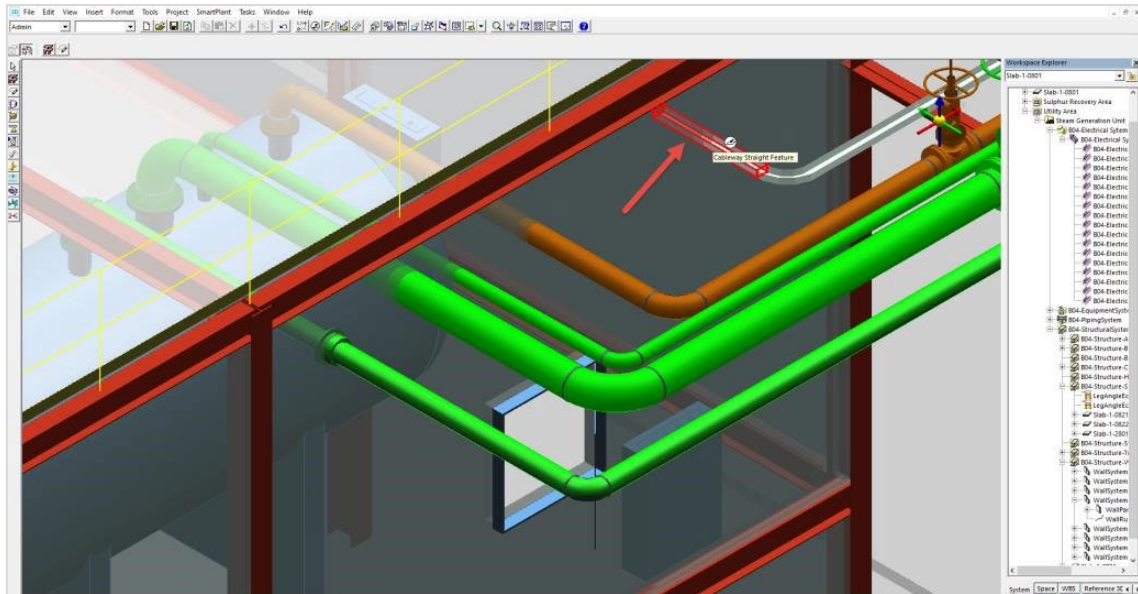
- 1 Choose "Tasks" in the menu bar in the upper edge of the program window. Then select "Electrical" in the list that is presented.



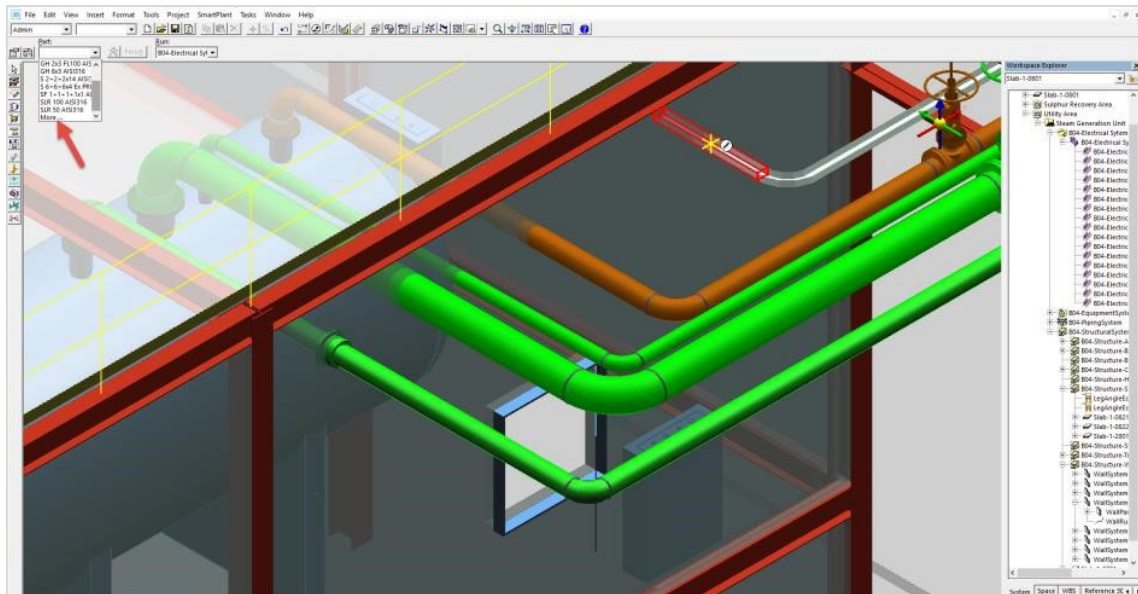
- 2 Choose "Insert component" from the vertical bar to the left.



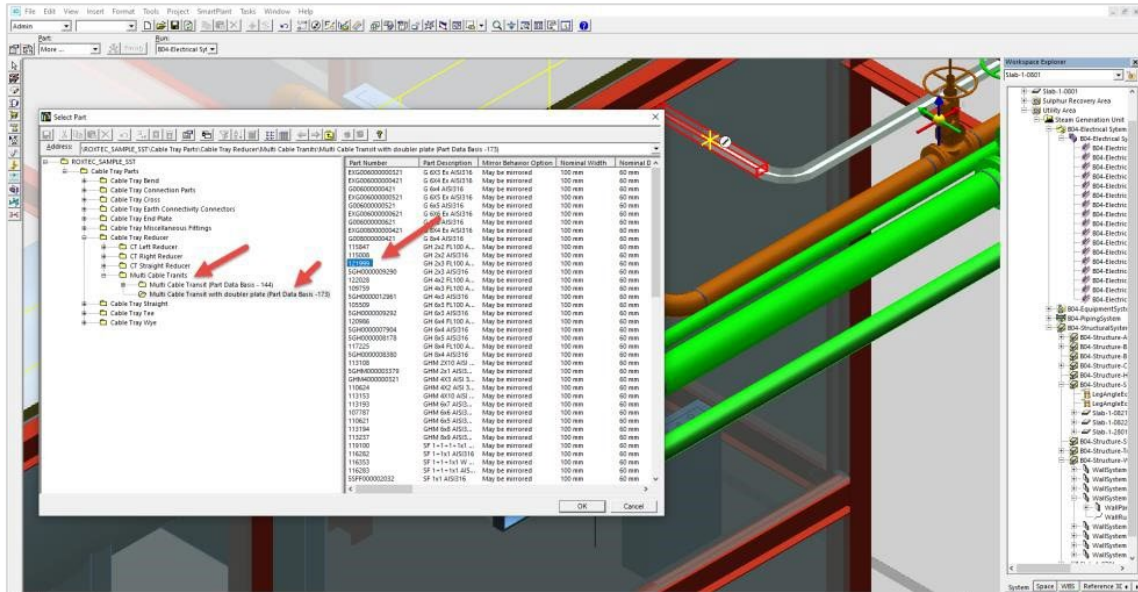
- 3 Select the position where the seal shall be placed. This is done by clicking on the cable tray.



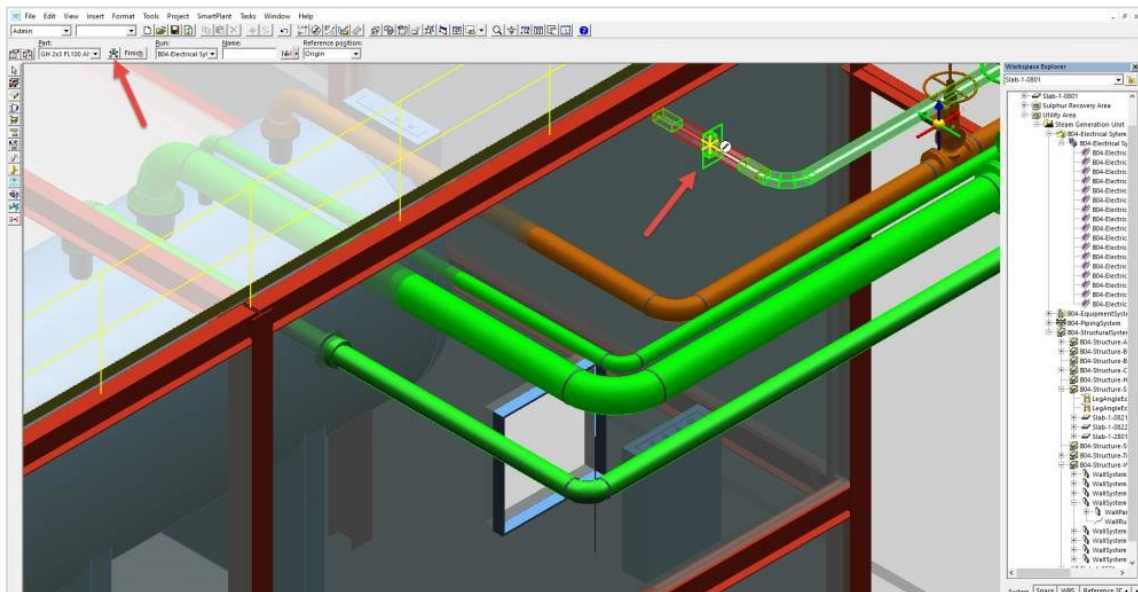
- 4 The previous action will result in a pop-up menu appearing in the top left corner. Scroll down and click "More".



- 5 A new window will open. Expand “Cable tray reducer” and then “Multi Cable Transit” and “Multi Cable Transit with doubler plate”. Choose the article to place. Confirm by clicking “OK”.

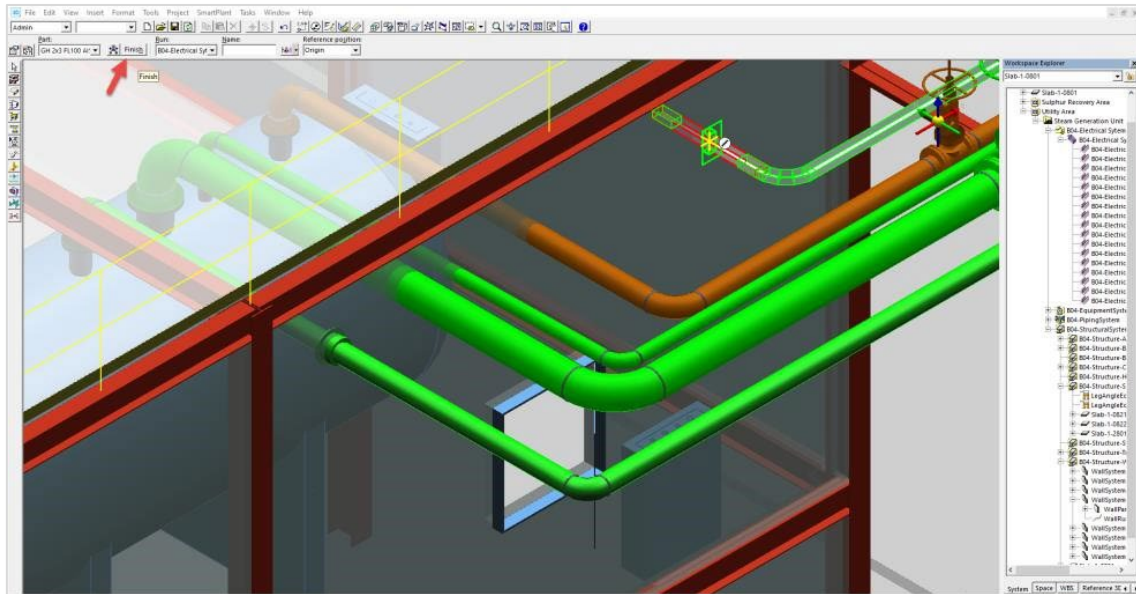


- 6 The previous action enables a transparent preview of the seal. Choose the option “Enter Insertion Point” in the mid-left upper bar to change the position of the seal. Move the position by clicking on the cable.

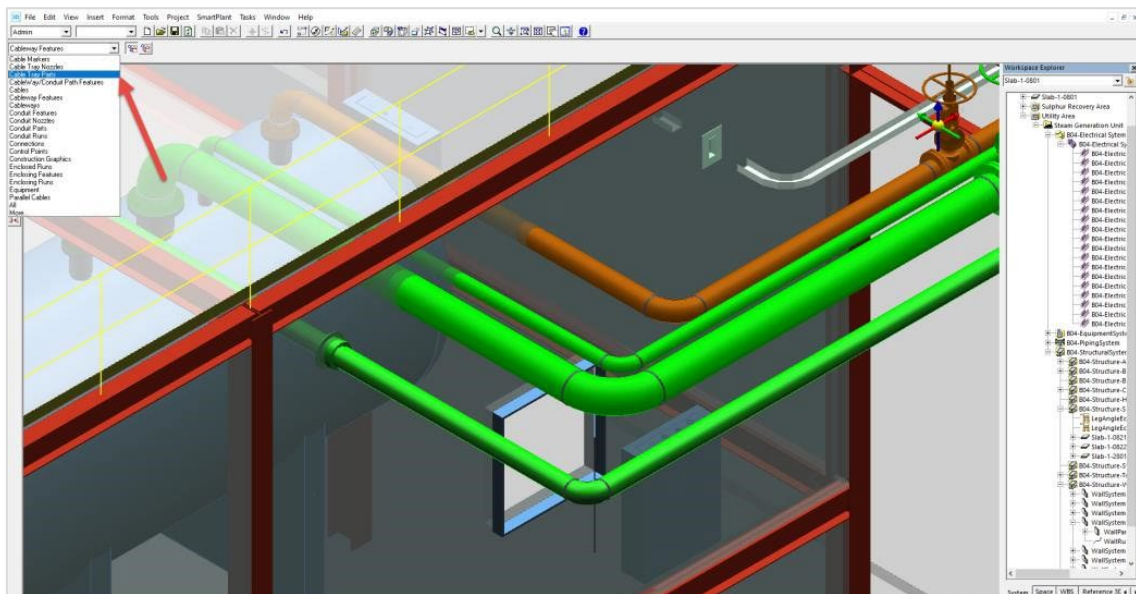




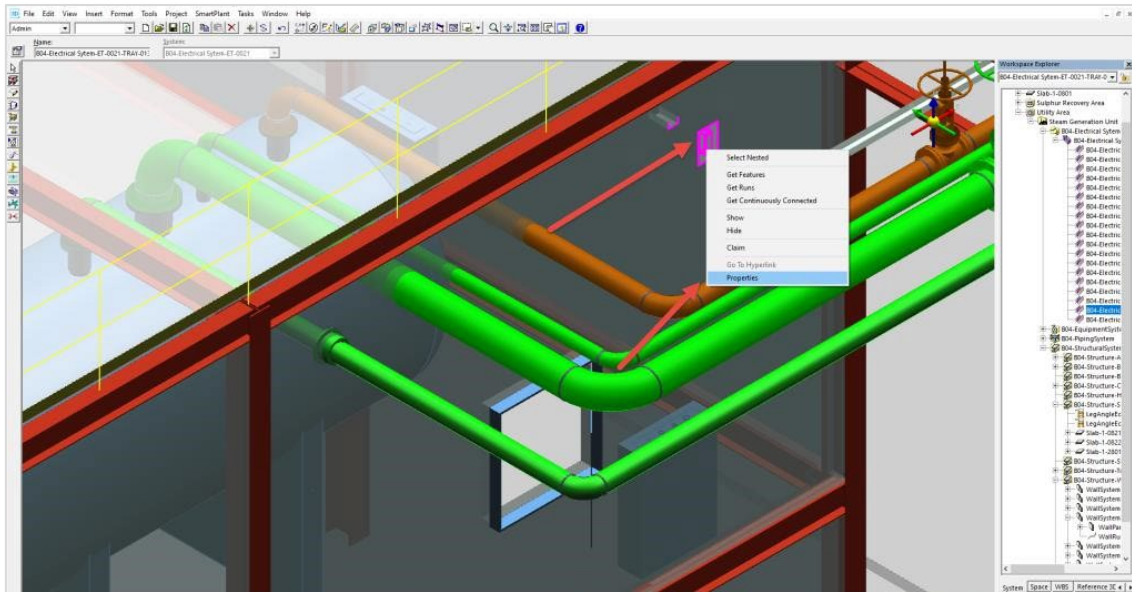
7 Click “Finish” to place the component.



8 Some parameters may be changed to alter the visualization of the model. These parameters do not relate to dimensions that are defined by the articles themselves. To do this, select the “Cable Tray Parts” in the top-left corner.



9 Click on the cable and then right-click and choose "Properties".



10 Choose the parameters of interest to modify and confirm.

