

Cable and pipe seals for the power and process industries

Contents

Protecting life and assets	3
The Roxtec sealing system	4
Certified protection	5
Roxtec Transit Designer™	6
Roxtec BIM objects	7
Easy installation	8
Solutions for walls and floors	9
Roxtec GH transit	10
Roxtec GHM transit	11
Roxtec GH BG™ transit	12
Roxtec GH FL 100 transit	12
Roxtec GH FL100 BG™ transit	14
Roxtec G transit	15
Roxtec G BG™ transit	16
Roxtec G bolted Ex transit	17
Roxtec S transit	18
Roxtec S BG™ transit	19
Roxtec S Ex transit	20
Roxtec G welded Ex transit	21
Solutions for cabinets	22
Roxtec HD transits	23
Roxtec HD BG™ transits	24
Roxtec HD Ex transits	25
Roxtec CF 8/32 transit	26
Roxtec CF 8/32 BG™ transit	27
Roxtec CF 8/32 Ex transit	28
Roxtec ComSeal™	29
Solutions for underground foundations	30
Roxtec R UG™ transit	31
Roxtec RS UG™ seal	32
Roxtec H3 UG™ seal	32
Roxtec H3+1 UG™ seal	34
Roxtec knock-out sleeve	35

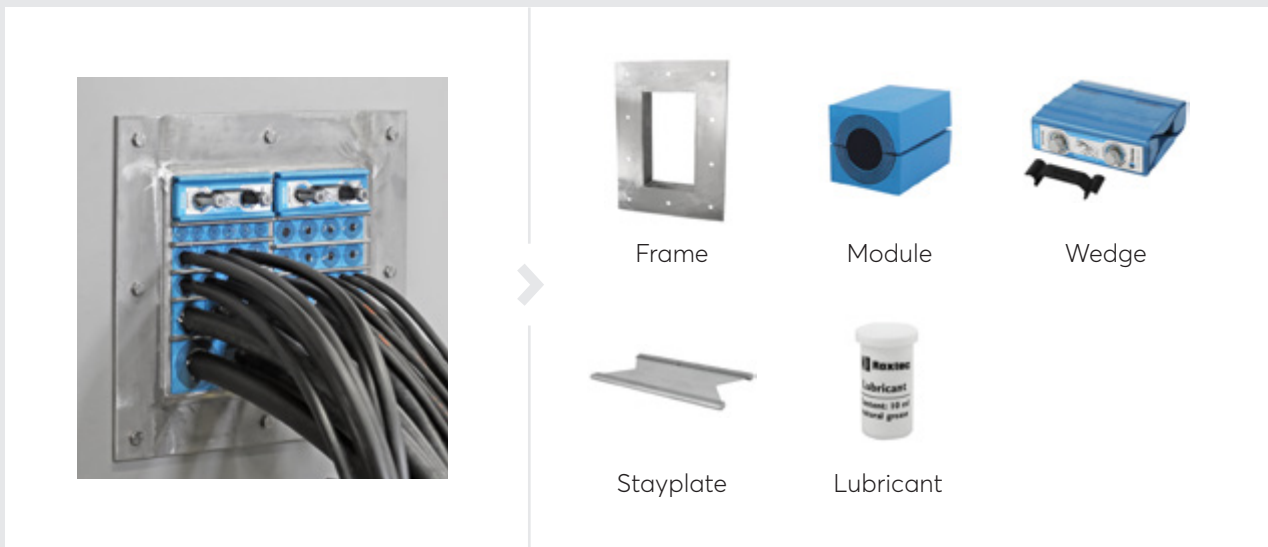


Protecting life and assets

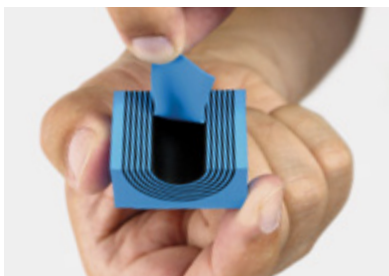
Benefit from the world's most flexible cable and pipe transits, wherever and whatever you operate. You can count on our expertise, from design to installation and throughout the lifecycle of your investment. Our passion is innovative sealing solutions, and our goal is to make our world a safer place. That is why we offer you a long-term partnership for efficiency and operational reliability.

The Roxtec sealing system

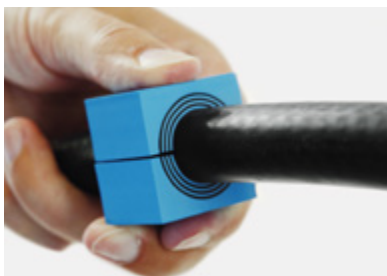
Our mechanical system is smart, safe and flexible. We provide rectangular, round and customized sealing solutions for one or multiple cables and pipes as well as pre-configured sealing kits. Thanks to the adaptability, you can always be sure to cover the sealing requirements with only a few components.



Multidiameter™ by Roxtec



Our invention with removable layers makes the seals adaptable.



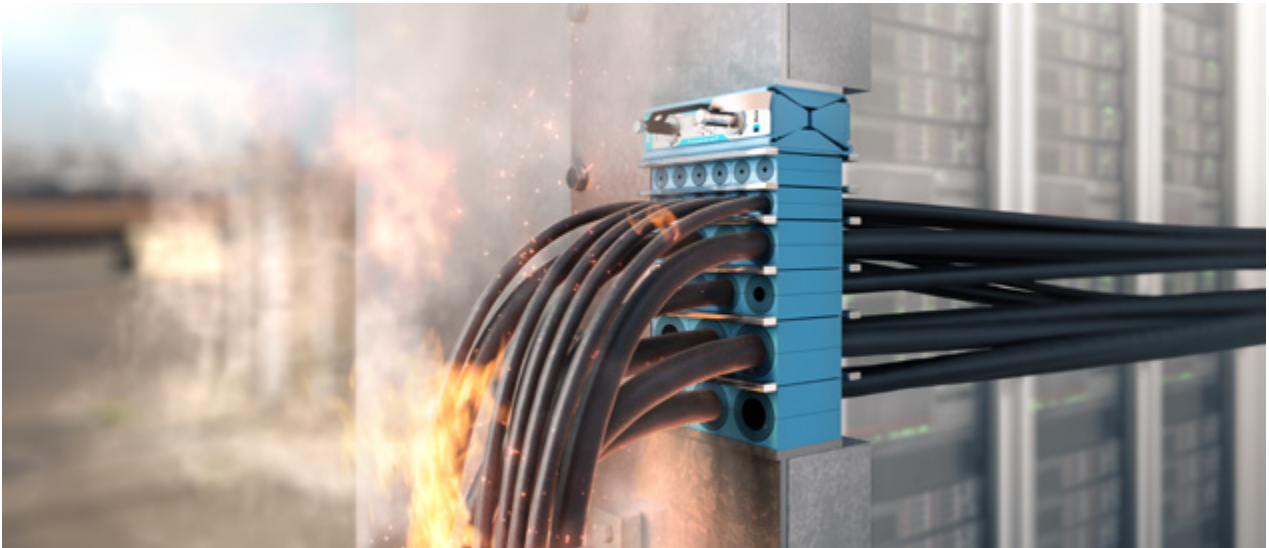
It ensures a perfect fit to cables and pipes of many different sizes.



You get a strong, reliable barrier securing operational performance.

Certified protection

Roxtec cable and pipe transits protect demanding projects worldwide against multiple risk factors. Our seals ensure safe operations in harsh environments. They are approved for use in hazardous locations and provide solutions for bonding and grounding.



Use the Roxtec sealing system to protect against multiple risks:

Fire

Stop fire and smoke from spreading.

Water

Keep your unit safe and dry. Prevent humidity, water ingress, flooding and corrosion.

Gas

Ensure complete tightness against air and gas.

Electromagnetic threats

Ensure bonding, grounding and EMI/EMP protection.

Particles

Take control of dirt, dust and chemicals.

Pests

Keep snakes, insects and rodents out.

Blast

Protect against pressure, shockwaves, vibration and the risk of explosion.

"We save a lot of time, up to 80%, especially when changes are needed."

Niels Ammundsen, Chief Process Officer at OMT, Denmark



Roxtec Transit Designer™

This free, online engineering tool simplifies product selection and secures the entire process of reducing risk. Save time by designing hundreds of cable and pipe transits in just a few minutes. The software is open for third party integration with CAD programs.

Simple user input:

- Cable/pipe schedule or estimates
- Sealing/certification requirements
- Installation preferences
- Material quality selection



Automatically generated output:

- 2D drawings in DXF and PDF
- 3D STEP
- Bill of material in Excel
- Installation instructions
- Certificates

Sign up for Roxtec Transit Designer™ at roxtec.com/transitdesigner

Roxtec BIM objects

Download Roxtec BIM (Building Information Modeling) objects to optimize your design workflow. You can plan, design, construct and manage buildings and other assets in infrastructure projects. We can also assist you from the early design phase. We have an entire team of designers, engineers and test technicians ready to create, develop and test tailor-made seals according to your requirements.



Streamline the workflow

- Benefit from early integration
- Ensure correct drawings
- Repeat in your next project

Secure long-term reliability

- Get the right sealing products
- Simplify quality assurance
- Save time and increase efficiency

Download Roxtec BIM objects on roxtec.com/bim

Easy installation

Roxtec seals are quick and easy to install. You can open and reinstall them after design changes and save a lot of time by using the built-in spare capacity for upgrades with additional cables and pipes. You can always find best practice on roxtec.com/installation.



Support online and onsite



Installation videos

Watch and learn the safest sealing process.



Installation tools

Speed up daily work with our smart tools.



Installation training

Let your team learn our best tips and tricks.

Solutions for walls and floors

Use the table to find a solution matching your needs. You are always welcome to contact your Roxtec representative for assistance.

	GH	GHM	GH FL100	G	S
Bolting – Brick and concrete			●		
Bolting – Sandwich panels		●			
Bolting – Metal	●	●			
Casting	●				
Welding				●	●
Blast tested	●	●	●	●	●
Fire rated	●	●	●	●	●
Gas-tight		●		●	●
Watertight		●		●	●
IP 66/67	●	●	●	●	●
ES version available*	●	●	●	●	●
BG version available**	●		●	●	●
Ex version available***		●		●	●

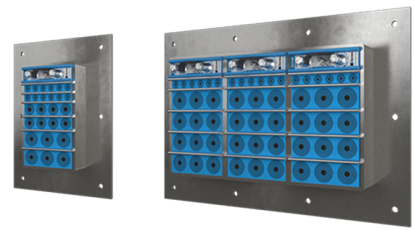
*Electromagnetic shielding **Bonding and grounding ***IECEX/ATEX rated

Complete product data online

Please visit roxtec.com/products for the latest and complete information on our sealing solutions. All technical data, such as product dimensions, ratings and certificates, drawings and installation instructions, are available online.

Roxtec GH transit

Transit with flange, for casting or bolting.



The Roxtec GH is a cable and pipe seal for casting in concrete or bolting onto even structures. The rectangular steel frame allows for high cable and pipe packing density. The transit can be used with a GE extension frame to cover the depth of a thick wall.

Benefits

- Fire rated
- Watertight
- Dust-tight
- Rodent resistant
- Easy to maintain and inspect
- Provides built-in spare capacity
- Vibration tested

Installation

Structure of installation:

- Metal
- Concrete/Brick
- Gypsum

Mounting type:

- Bolting
- Casting

Ratings & certificates

Fire:

- E/EI rating according to EN 1366-3
- E/EI rating according to EN 45545
- F/T rating according to UL 1479

Rating:

- IP 66/67

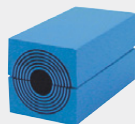
Sealing components



Roxtec GH frame



Roxtec Wedge & Wedgekit



Roxtec RM module with Multidiameter™



Roxtec Stayplate



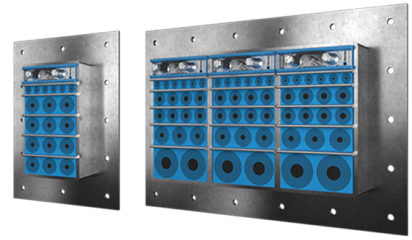
Roxtec Lubricant



Roxtec Sealing kit

Roxtec GHM transit

Transit for high cable density and large cables.



The Roxtec GHM is a light-weight cable entry seal which is attached by bolting and includes a sealing strip to seal against the structure. The transit frame is available in different materials and in a single or various combinations of openings. The sealing modules are adaptable to cables and pipes of different sizes, and can be used to build in spare capacity in the transit.

Benefits

- Fire rated
- Gas-tight
- Watertight
- Dust-tight
- Rodent resistant
- Area efficient

Installation

Structure of installation:

- Metal
- Sandwich
- Cabinet

Mounting type:

- Bolting

Ratings & certificates

Fire:

- A-CLASS according to IMO 2010 FTP Code
- H-CLASS according to IMO 2010 FTP Code+ HC-fire load curve

Watertightness:

- 3 bar (catastrophic)

Rating:

- IP 66/67

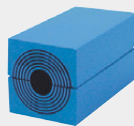
Sealing components



Roxtec GHM frame



Roxtec Wedge & Wedgekit



Roxtec RM module with Multidiameter™



Roxtec Stayplate

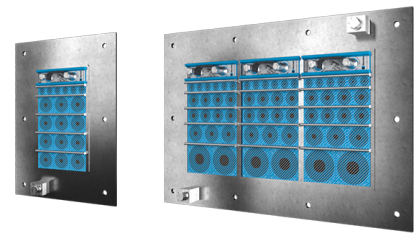


Roxtec Lubricant



Roxtec Sealing kit

Roxtec GH BG™ transit



Transit with flange and earthing terminal,
for bolting onto even structures.

The Roxtec GH BG™ is a cable and pipe seal for bonding and grounding applications. The rectangular steel frame is bolted onto steel or sandwich walls/floors and allows for high cable and pipe packing density. The transit can be used with a GE extension frame in galvanized steel to cover the depth of a thick wall. Roxtec EC (electrical continuity) test sticks are available to help indicate the electrical performance of the transit installation.

Benefits

- Watertight
- Dust-tight
- Rodent resistant
- Bonding and grounding solution
- Easy to maintain and inspect

Installation

Structure of installation:

- Metal
- Gypsum
- Cabinet

Mounting type:

- Bolting

Ratings & certificates

Fire:

- E/EI rating according to EN 1366-3
- F/T rating according to UL 1479

Rating:

- IP 66/67

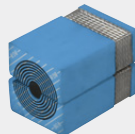
Sealing components



Roxtec GH BG™
frame



Roxtec Wedge &
Wedgekit



Roxtec RM BG™
module with
Multidiameter™



Roxtec Stayplate

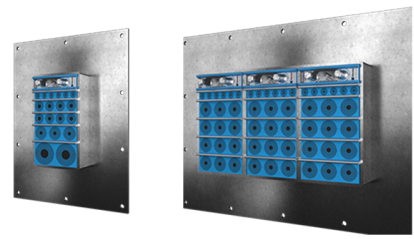


Roxtec Lubricant



Roxtec BG™ sealing
kit

Roxtec GH FL100 transit



Transit with wide flange, for bolting onto uneven structures.

The Roxtec GH FL100 is a cable and pipe seal that allows for high packing density. The transit ensures a tight seal when bolted onto concrete or brick walls/floors. The rectangular steel frame has a 100mm wide flange to make it possible to place the bolting holes further from the opening in the wall to avoid the risk of cracks. The transit can be used with a GE extension frame in galvanized steel to cover the depth of a thick wall.

Benefits

- Watertight
- Dust-tight
- Rodent resistant
- Area efficient
- Easy to maintain and inspect

Installation

Structure of installation:

- Concrete/Brick

Mounting type:

- Bolting

Ratings & certificates

Fire:

- E/EI rating according to EN 1366-3
- F/T rating according to UL 1479

Rating:

- IP 66/67

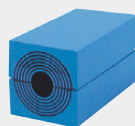
Sealing components



Roxtec GH FL100 frame



Roxtec Wedge & Wedgekit



Roxtec RM module with Multidiameter™



Roxtec Stayplate

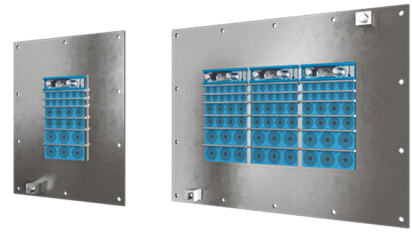


Roxtec Lubricant



Roxtec Sealing kit

Roxtec GH BG™ FL100 transit



Transit with wide flange and earthing terminal, for bolting onto uneven structures.

The Roxtec GH BG™ FL100 is a cable and pipe seal for bonding and grounding applications. The rectangular steel frame with the wide flange ensures a tight seal when bolted onto concrete or brick walls/floors. The seal allows for high cable and pipe packing density. The transit can be used with a GE extension frame in galvanized steel to cover the depth of a thick wall. Roxtec EC (electrical continuity) test sticks are available to help indicate the electrical performance of the transit installation.

Benefits

- Watertight
- Dust-tight
- Bonding and grounding solution
- Easy to maintain and inspect
- Provides built-in spare capacity

Installation

Structure of installation:

- Concrete/Brick

Mounting type:

- Bolting

Ratings & certificates

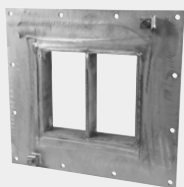
Fire:

- E/EI rating according to EN 1366-3
- F/T rating according to UL 1479

Rating:

- IP 66/67

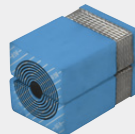
Sealing components



Roxtec GH BG™
FL100 frame



Roxtec Wedge &
Wedgekit



Roxtec RM BG™
module with
Multidiameter™



Roxtec Stayplate



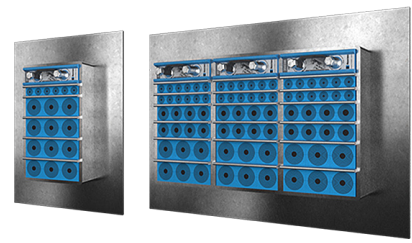
Roxtec Lubricant



Roxtec BG™ sealing
kit

Roxtec G transit

Transit with flange, for welding.



The Roxtec G is a cable and pipe seal with a steel frame for welding. The transit can be used with a GE extension frame in galvanized steel to cover the depth of a thick wall.

Benefits

- Fire rated
- Gas-tight
- Watertight
- Dust-tight
- Provides built-in spare capacity

Installation

Structure of installation:

- Metal
- Cabinet

Mounting type:

- Welding

Ratings & certificates

Fire:

- A-CLASS according to IMO 2010 FTP Code
- E/EI rating according to EN 1366-3
- F/T rating according to UL 1479

Gas-tightness:

- 2.5 bar (catastrophic)

Watertightness:

- 4 bar (catastrophic)

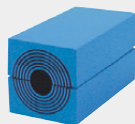
Sealing components



Roxtec G frame



Roxtec Wedge & Wedgekit



Roxtec RM module with Multidiameter™



Roxtec Stayplate

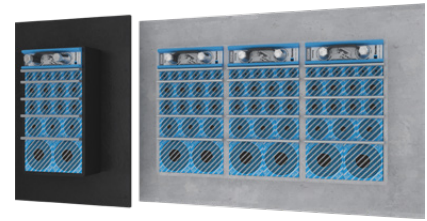


Roxtec Lubricant



Roxtec Sealing kit

Roxtec G BG™ transit



Transit with flange for bonding and grounding, for welding.

The Roxtec G BG™ is a transit for sealing, bonding and grounding of armored and metal-clad cables and pipes. It has a steel frame for welding and Roxtec BG™ sealing modules which are adaptable to a variety of cable sizes. The transit can be used with a GE extension frame in galvanized steel to cover the depth of a thick wall. Roxtec EC (electrical continuity) test sticks are available to help indicate the electrical performance of the transit installation.

Benefits

- Fire rated
- Gas-tight
- Watertight
- Dust-tight
- Provides built-in spare capacity

Installation

Structure of installation:

- Metal
- Cabinet

Mounting type:

- Welding

Ratings & certificates

Fire:

- A-CLASS according to IMO 2010 FTP Code
- E/EI rating according to EN 1366-3
- F/T rating according to UL 1479

Gas-tightness:

- 2.5 bar (catastrophic)

Watertightness:

- 4 bar (catastrophic)

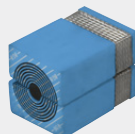
Sealing components



Roxtec G frame



Roxtec Wedge & Wedgekit



Roxtec RM BG™ module with Multidiameter™



Roxtec Stayplate

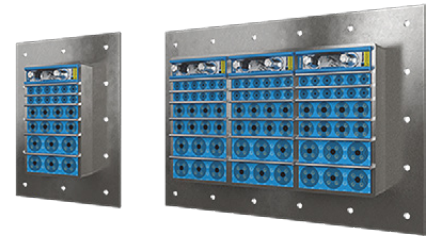


Roxtec Lubricant



Roxtec BG™ sealing kit

Roxtec G bolted Ex transit



Ex rated transit with flange, for bolting.

The Roxtec G bolted Ex is a high cable density transit that is rated for Ex eb and Ex tb areas in temperatures from -60 to +80°C. The frame is attached by bolting and includes a gasket for sealing against the structure.

Benefits

- Gas-tight
- Watertight
- Dust-tight
- Approved for hazardous (Ex) locations
- Easy to maintain and inspect
- Provides built-in spare capacity

Installation

Structure of installation:

- Metal
- Sandwich
- Cabinet

Mounting type:

- Bolting

Ratings & certificates

Rating:

- Ex e/Ex tb
- IP 66/67

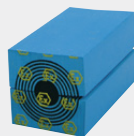
Sealing components



Roxtec G bolted Ex frame



Roxtec Wedge & Wedgekit Ex



Roxtec RM Ex module with Multidiameter™



Roxtec Stayplate Ex



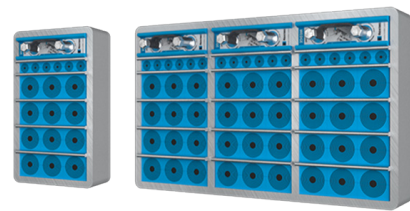
Roxtec Lubricant



Roxtec Ex sealing kit

Roxtec S transit

Transit for welding to the structure.



The Roxtec S is a multi-cable and pipe transit available in different materials and with a single or various combinations of openings. The transit frame is produced in 10mm thick metal and is attached to the structure by welding. The sealing modules are adaptable to cables and pipes of different sizes, and can be used to build in spare capacity in the transit.

Benefits

- Fire rated
- Gas-tight
- Watertight
- Dust-tight
- Easy to maintain and inspect
- Provides built-in spare capacity
- Vibration tested

Installation

Structure of installation:

- Metal

Mounting type:

- Welding

Ratings & certificates

Fire:

- A-CLASS according to IMO 2010 FTP Code
- H-CLASS according to IMO 2010 FTP Code+ HC-fire load curve
- E/EI rating according to EN 45545

Gas-tightness:

- 2.67 bar (catastrophic)

Watertightness:

- 4 bar (catastrophic)

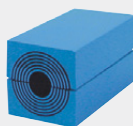
Sealing components



Roxtec S frame



Roxtec Wedge & Wedgekit



Roxtec RM module with Multidiameter™



Roxtec Stayplate

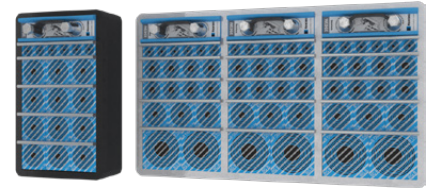


Roxtec Lubricant



Roxtec Sealing kit

Roxtec S BG™ transit



Transit for bonding and grounding, for welding to the structure.

The Roxtec S BG™ is a transit for sealing, bonding and grounding of multiple armored or metal-clad cables and pipes. It is available in different materials and with a single or various combinations of openings. The transit frame is produced in 10mm thick metal and is attached to the structure by welding. The Roxtec BG™ sealing modules are adaptable to cables and pipes of different sizes, and can be used to build in spare capacity in the transit. Roxtec EC (electrical continuity) test sticks are available to help indicate the electrical performance of the transit installation.

Benefits

- Fire rated
- Gas-tight
- Watertight
- Dust-tight
- Easy to maintain and inspect
- Provides built-in spare capacity

Installation

Structure of installation:

- Metal

Mounting type:

- Welding

Ratings & certificates

Fire:

- A-CLASS according to IMO 2010 FTP Code
- H-CLASS according to IMO 2010 FTP Code+ HC-fire load curve

Gas-tightness:

- 2.5 bar (catastrophic)

Watertightness:

- 4 bar (catastrophic)

Rating:

- IP 66/67

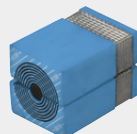
Sealing components



Roxtec S frame



Roxtec Wedge & Wedgekit



Roxtec RM BG™ module with Multidiameter™



Roxtec Stayplate

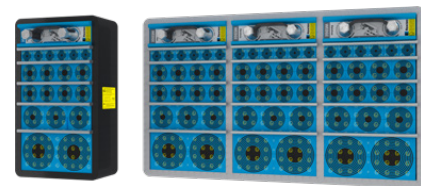


Roxtec Lubricant



Roxtec BG™ sealing kit

Roxtec S Ex transit



Ex rated transit for welding to the structure.

The Roxtec S Ex is a multi-cable and pipe transit rated for Ex eb and Ex tb areas. The transit frame is available in different materials and with a single or various combinations of openings. The frame is produced in 10mm thick metal and is attached to the structure by welding. The Roxtec Ex sealing modules adapt to cables and pipes of different sizes and can be used to build in spare capacity in the seal.

Benefits

- Fire rated
- Gas-tight
- Watertight
- Dust-tight
- Easy to maintain and inspect
- Provides built-in spare capacity

Installation

Structure of installation:

- Metal

Mounting type:

- Welding

Ratings & certificates

Fire:

- A-CLASS according to IMO 2010 FTP Code
- H-CLASS according to IMO 2010 FTP Code+ HC-fire load curve

Gas-tightness:

- 2.5 bar (catastrophic)

Watertightness:

- 4 bar (catastrophic)

Rating:

- Ex e/Ex tb
- IP 66/67

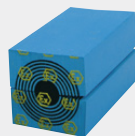
Sealing components



Roxtec S Ex frame



Roxtec Wedge & Wedgekit Ex



Roxtec RM Ex module with Multidiameter™



Roxtec Stayplate Ex

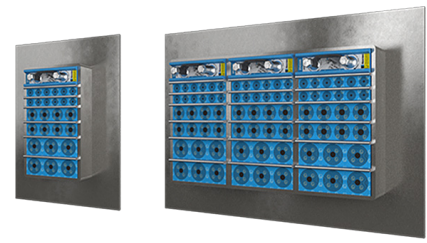


Roxtec Lubricant



Roxtec Ex sealing kit

Roxtec G welded Ex transit



Ex rated transit with flange, for welding to the structure.

The Roxtec G welded Ex is a high cable density transit that is rated for Ex e and Ex tb areas in temperatures from -60 to +80°C. The frame is attached by welding.

Benefits

- Gas-tight
- Watertight
- Dust-tight
- Approved for hazardous (Ex) locations

Installation

Mounting type:

- Welding

Ratings & certificates

Rating:

- Ex e/Ex tb
- IP 66/67

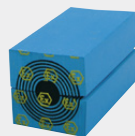
Sealing components



Roxtec G welded Ex frame



Roxtec Wedge & Wedgekit Ex



Roxtec RM Ex module with Multidiameter™



Roxtec Stayplate Ex



Roxtec Lubricant



Roxtec Ex sealing kit

Solutions for cabinets

Use the table to find a solution matching your needs. You are always welcome to contact your Roxtec representative for assistance.

	HD	CF 8/32	ComSeal	GH	GHM
Cable/pipe range (mm)	3.5–54	3.5–34.5	3.5–34.5	3.5–54	3.5–54
IP 55			●		
IP 66/67	●	●		●	●
UL/NEMA 3, 12, 12K			●		
UL/NEMA 4, 4X, 12, 13	●	●			
Nickel-plated aluminum		●			
Powder coated aluminum			●		
Stainless steel	●		●	●	●
Galvanized steel				●	●
Pre-configured sealing kits available	●	●	●		
ES version available*		●	●	●	●
BG version available**	●	●		●	
Ex version available***	●	●			●

*Electromagnetic shielding **Bonding and grounding ***IECEX/ATEX rated

Complete product data online

Please visit roxtec.com/products for the latest and complete information on our sealing solutions. All technical data, such as product dimensions, ratings and certificates, drawings and installation instructions, are available online.

Roxtec HD transits

High cable density transit devices with frame in 316L.



The Roxtec HD transits are cable entry devices for harsh and hazardous environments that allow up to 32 cables per opening. They are available in three different sizes. The cable transit has a 316L stainless steel frame and sealing modules which are adaptable to a variety of cable sizes.

Benefits

- Watertight
- Dust-tight
- Rodent resistant
- Corrosion resistant
- Light-weight
- Area efficient
- Allows pre-terminated cables

Installation

Structure of installation:

- Cabinet

Mounting type:

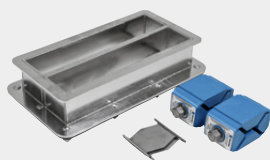
- Bolting

Ratings & certificates

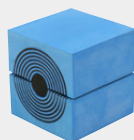
Rating:

- IP 66/67
- UL/NEMA 4,4X,12,13

Sealing components



Roxtec HD frame



Roxtec HD module with Multidiameter™



Roxtec Lubricant

Roxtec HD BG™ transits



High cable density transit devices for bonding and grounding.

The Roxtec HD BG™ are cable entry devices for sealing, bonding and grounding of armored and metal-clad cable in harsh and hazardous environments, available in three different sizes. The cable transit allows up to 32 cables per opening. It has a 316L stainless steel frame and Roxtec BG™ sealing modules which are adaptable to a variety of cable sizes.

Benefits

- Watertight
- Dust-tight
- Rodent resistant
- Corrosion resistant
- Light-weight
- Area efficient
- Allows pre-terminated cables

Installation

Structure of installation:

- Cabinet

Mounting type:

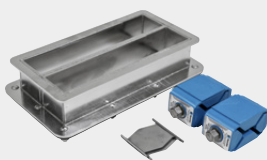
- Bolting

Ratings & certificates

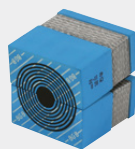
Rating:

- IP 66/67
- UL/NEMA 4,4X,12,13

Sealing components



Roxtec HD frame



Roxtec CM BG™
module with
Multidiameter™



Roxtec Lubricant

Roxtec HD Ex transits



High cable density transit devices for Ex environments with a frame in 316L.

The Roxtec HD Ex are cable transit devices for harsh and hazardous environments. They are certified for Ex eb and Ex tb areas in temperatures from -60 to +80°C and available in three different sizes. The cable transits are area efficient and allow up to 32 cables per opening. The entry seals have a 316L stainless steel frame and sealing modules which are adaptable to a variety of cable sizes. The seal can be used with armored cable requiring bonding and grounding.

Benefits

- Watertight
- Dust-tight
- Corrosion resistant
- Approved for hazardous (Ex) locations
- Light-weight
- Area efficient

Installation

Structure of installation:

- Cabinet

Mounting type:

- Bolting

Ratings & certificates

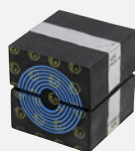
Rating:

- Ex eb/Ex tb
- IP 66/67
- UL/NEMA 4,4X,12,13

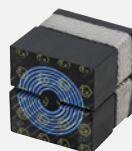
Sealing components



Roxtec HD Ex frame



Roxtec CX module with Multidiameter™



Roxtec CX BG™ module with Multidiameter™



Roxtec Assembly Gel Ex

Roxtec CF 8/32 transit



High cable density transit with aluminum frame.

The Roxtec CF 8 and CF 32 cable entry seals have frames of cast aluminum and sealing modules which are adaptable to a variety of cable sizes.

Benefits

- Watertight
- Dust-tight
- Rodent resistant
- Light-weight
- Area efficient
- Allows pre-terminated cables
- Vibration tested

Installation

Structure of installation:

- Cabinet

Mounting type:

- Bolting

Ratings & certificates

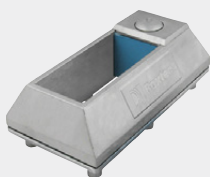
Fire:

- E/EI rating according to EN 45545

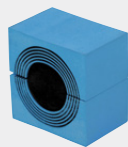
Rating:

- IP 66/67
- UL/NEMA 4,4X,12,13

Sealing components



Roxtec CF 8/32 frame



Roxtec CM module with Multidiameter™



Roxtec Lubricant

Roxtec CF 8/32 BG™ transit



High cable density transit for bonding and grounding, with aluminum frame.

The Roxtec CF 8 BG™ and CF 32 BG™ are cable entry seals for bonding and grounding of armored and metal-clad cables. The transits have frames of cast nickel-plated aluminum. The Roxtec BG™ sealing modules are adaptable to different sizes of cable.

Benefits

- Watertight
- Dust-tight
- Rodent resistant
- Light-weight
- Area efficient
- Allows pre-terminated cables

Installation

Structure of installation:

- Cabinet

Mounting type:

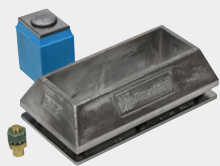
- Bolting

Ratings & certificates

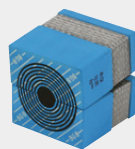
Rating:

- IP 66/67
- UL/NEMA 4,4X,12,13

Sealing components



Roxtec CF 8/32 BG™
frame



Roxtec CM BG™
module with
Multidiameter™



Roxtec Lubricant

Roxtec CF 8/32 Ex transit



High cable density aluminum transit for enclosures.

The Roxtec CF 8 Ex and CF 32 Ex are cable and pipe transits with frames of cast aluminum. The entry seals are certified for Ex eb and Ex tb areas in temperatures from -40 to +80°C and can be used with armored cables that require bonding and grounding. The sealing modules are adaptable to cables and pipes of different sizes.

Benefits

- Watertight
- Dust-tight
- Rodent resistant
- Approved for hazardous (Ex) locations
- Light-weight
- Area efficient

Installation

Structure of installation:

- Cabinet

Mounting type:

- Bolting

Ratings & certificates

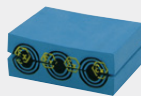
Rating:

- Ex e/Ex tb
- IP 66/67
- UL/NEMA 4,4X,12,13

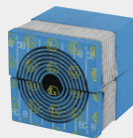
Sealing components



Roxtec CF 8/32 Ex frame



Roxtec CM Ex module with Multidiameter™



Roxtec CM BG™ Ex module with Multidiameter™



Roxtec Lubricant

Roxtec ComSeal™



IP 55 rated entry seals with aluminum frame.

The Roxtec ComSeal™ is rated for IP 55 and available with powder coated aluminum and AISI 316, stainless steel frames. The transit is available in six different sizes to accommodate up to 32 cables.

Benefits

- Watertight
- Dust-tight
- Rodent resistant
- Corrosion resistant
- Light-weight
- Area efficient
- Vibration tested

Installation

Structure of installation:

- Cabinet

Mounting type:

- Bolting

Ratings & certificates

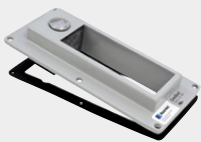
Fire:

- E/EI rating according to EN 45545

Rating:

- IP 55
- UL/NEMA 3,12,12K

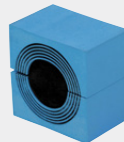
Sealing components



Roxtec ComSeal™
frame



Roxtec ComSeal™ AISI
316 frame



Roxtec CM
module with
Multidiameter™



Roxtec Assembly
Gel

Solutions for underground foundations

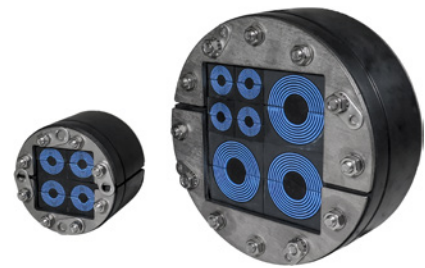
Use the table to find a solution matching your needs. You are always welcome to contact your Roxtec representative for assistance.

	R UG	RS UG	H3 UG	H3+1 UG	Knock-out sleeve
Multiple cables/pipes	●				
Single cable/pipe		●			
Cables/pipes in trefoil formation			●		
Trefoil formation + grounding cable				●	
For use prior to cable/pipe routing					●
Standing water pressure	●	●	●	●	●
Installation in running water	●	●	●	●	
Gas-tight	●	●	●	●	●
Cable retention	●	●	●	●	
Rodent protection	●	●	●	●	●
Pre-configured sealing kits available	●				

Complete product data online

Please visit roxtec.com/products for the latest and complete information on our sealing solutions. All technical data, such as product dimensions, ratings and certificates, drawings and installation instructions, are available online.

Roxtec R UG™ transit



Transit in flexible configuration for multiple cables and pipes entering via foundations.

The Roxtec R UG™ is a transit for multiple cables and pipes entering via foundations. The seal allows for a mix of small and large cables and pipes in the same opening and works as a long-lasting barrier against flooding, gas, humidity and rodents. The transit withstands extreme cable bending and can be installed into sleeves, conduits and core drilled holes also in wet conditions and environments with running water.

Benefits

- Watertight
- Rodent resistant
- Area efficient
- Quick and easy to install
- Easy to maintain and inspect

Installation

Structure of installation:

- Concrete/Brick

Mounting type:

- Expansion

Ratings & certificates

Gas-tightness:

- 0.3 bar (constant)

Watertightness:

- 0.3 bar (constant)

Rating:

- IP 68

Sealing components



Roxtec R UG™ frame



Roxtec RM UG™
module with
Multidiameter™



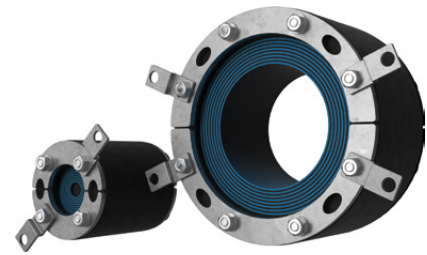
Roxtec Lubricant



Roxtec R UG™ kit

Roxtec RS UG™ seal

Round seal for single cables and pipes entering via foundations.



The Roxtec RS UG™ is a two-part seal for installation around single cables or pipes entering via foundations. It works as a long-lasting barrier against flooding, gas, humidity and rodents. The transit can be installed also in wet conditions and environments with running water. It withstands extreme cable bending and has a +5mm tolerance towards the aperture as well as an indicator showing when a compressed seal is achieved. The seal can be installed into sleeves, conduits and core drilled holes.

Benefits

- Watertight
- Rodent resistant
- Quick and easy to install
- Easy to maintain and inspect

Installation

Structure of installation:

- Concrete/Brick

Mounting type:

- Expansion

Ratings & certificates

Gas-tightness:

- 0.3 bar (constant)

Watertightness:

- 0.3 bar (constant)

Rating:

- IP 68

Sealing components



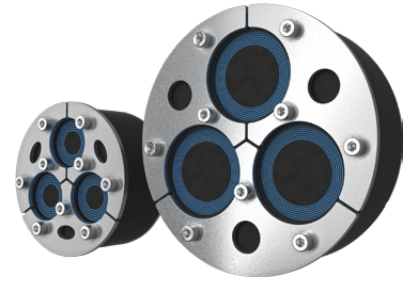
Roxtec RS UG™ seal



Roxtec Lubricant

Roxtec H3 UG™ seal

Transit for cables entering via foundations.



The Roxtec H3 UG™ seal is ideal for cables entering via foundations and works as a long-lasting barrier against flooding, gas, humidity and rodents. It is a three-part seal that is easy to install also in wet conditions and in environments with running water. The transit withstands extreme cable bending and has a +3mm tolerance towards the aperture as well as an indicator showing when a compressed seal is achieved. The seal can be installed into sleeves, conduits and core drilled holes.

Benefits

- Watertight
- Rodent resistant
- Quick and easy to install
- Provides excellent cable retention

Installation

Structure of installation:

- Concrete/Brick

Mounting type:

- Expansion

Ratings & certificates

Gas-tightness:

- 0.3 bar (constant)

Watertightness:

- 0.3 bar (constant)

Rating:

- IP 68

Sealing components



Roxtec H3 UG™ seal



Roxtec Lubricant

Roxtec H3+1 UG™ seal



Transit for cables entering via foundations.

The Roxtec H3+1 UG™ seal is ideal for power cables in trefoil formation entering via foundations together with a grounding cable. It works as a long-lasting barrier against flooding, gas, humidity and rodents. It is a four-part seal that is easy to install also in wet conditions and in environments with running water. The transit withstands extreme cable bending and has a +3mm tolerance towards the aperture as well as an indicator showing when a compressed seal is achieved. The seal can be installed into knock-out sleeves, conduits and core drilled holes.

Benefits

- Watertight
- Rodent resistant
- Quick and easy to install
- Provides excellent cable retention

Installation

Structure of installation:

- Concrete/Brick

Mounting type:

- Expansion

Ratings & certificates

Gas-tightness:

- 0.3 bar (constant)

Watertightness:

- 0.3 bar (constant)

Rating:

- IP 68

Sealing components

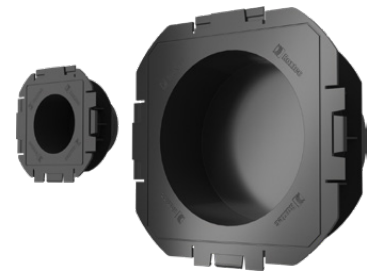


Roxtec H3+1 UG™ seal



Roxtec Lubricant

Roxtec knock-out sleeve



Sleeve with knock-out plate for sealing prior to cable and pipe routing.

The Roxtec knock-out sleeve (KOS) keeps your building dry during and after construction, and provides spare capacity for future needs. The sleeve is easily fixed and cast into structures of varying thickness and ensures a tight seal until its plate is knocked out for cable and pipe routing. The sleeves have an integrated feature which allows them to be connected into space efficient clusters. Once cables or pipes are routed, they are to be sealed with Roxtec UG™ underground solutions in the corresponding size.

Benefits

- Light-weight
- Area efficient
- Quick and easy to install

Installation

Structure of installation:

- Concrete/Brick

Mounting type:

- Casting

Ratings & certificates

Gas-tightness:

- 0.3 bar (constant)

Watertightness:

- 0.3 bar (constant)

Rating:

- IP 68

Disclaimer

"The Roxtec cable entry sealing system ("the Roxtec system") is a modular-based system of sealing products consisting of different components. Each and every one of the components is necessary for the best performance of the Roxtec system. The Roxtec system has been certified to resist a number of different hazards. Any such certification, and the ability of the Roxtec system to resist such hazards, is dependent on all components that are installed as a part of the Roxtec system. Thus, the certification is not valid and does not apply unless all components installed as part of the Roxtec system are manufactured by or under license from Roxtec ("authorized manufacturer"). Roxtec gives no performance guarantee with respect to the Roxtec system, unless (I) all components installed as part of the Roxtec system are manufactured by an authorized manufacturer and (II) the purchaser is in compliance with (a), and (b), below.

(a) During storage, the Roxtec system or part thereof, shall be kept indoors in its original packaging at room temperature.

(b) Installation shall be carried out in accordance with Roxtec installation instructions in effect from time to time.

The product information provided by Roxtec does not release the purchaser of the Roxtec system, or part thereof, from the obligation to independently determine the suitability of the products for the intended process, installation and/or use.

Roxtec gives no guarantee for the Roxtec system or any part thereof and assumes no liability for any loss or damage whatsoever, whether direct, indirect, consequential, loss of profit or otherwise, occurred or caused by the Roxtec systems or installations containing components not manufactured by an authorized manufacturer and/or occurred or caused by the use of the Roxtec system in a manner or for an application other than for which the Roxtec system was designed or intended.

Roxtec expressly excludes any implied warranties of merchantability and fitness for a particular purpose and all other express or implied representations and warranties provided by statute or common law. User determines suitability of the Roxtec system for intended use and assumes all risk and liability in connection therewith. In no event shall Roxtec be liable for indirect, consequential, punitive, special, exemplary or incidental damages or losses.*

All rights reserved

We reserve the right to make changes to the product and technical information without further notice. Any errors in print or entry are no claims for indemnity. The content of this publication is the property of Roxtec International AB and is protected by copyright.

Protecting life and assets

Roxtec is the world leader within flexible cable and pipe transits. Since the start in Sweden in 1990 we have grown successfully to cover all continents. Our passion is innovative sealing solutions, and our goal is to make our world a safer place.

- Extensive R&D resources and advanced test facilities
- Inventor of Multidiameter™
- Customers in more than 80 markets