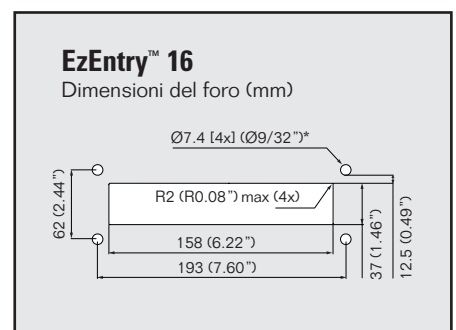
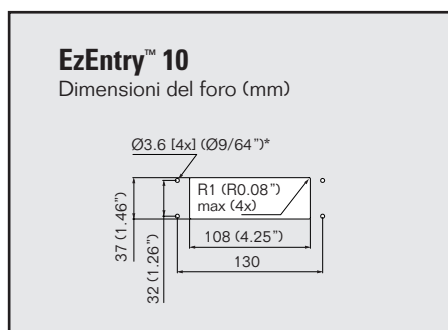
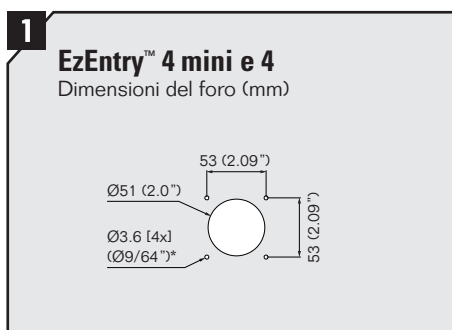


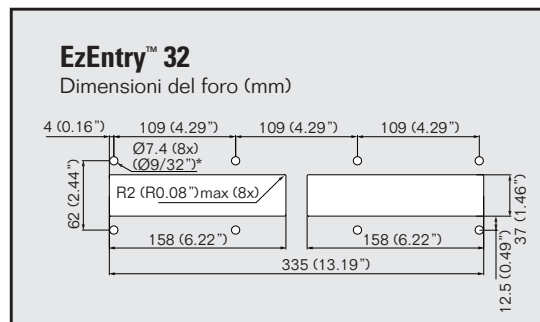
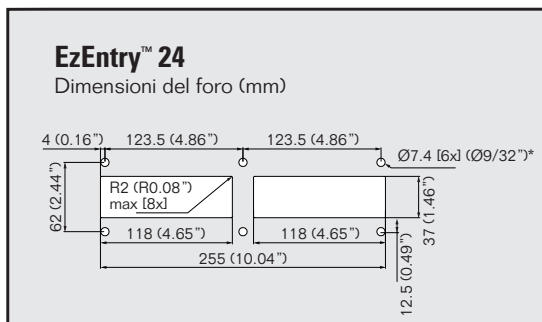
Istruzioni di montaggio Roxtec EzEntry™

Roxtec EzEntry™ dime di foratura



La dima di foratura di EzEntry™ 10 corrisponde a quella dei connettori standard.

La dima di foratura di EzEntry™ 16 corrisponde allo standard FL 21.



Rifinire i fori prima di fissare i controdadi

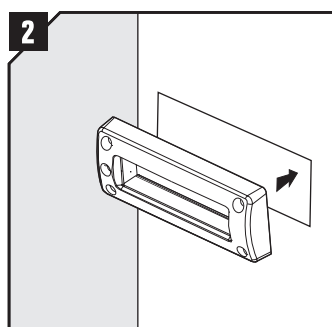
4 mini	4.5 mm	3/16"
4	4.5 mm	3/16"
10	4.5 mm	3/16"
16	9 mm	11/32"
24	9 mm	11/32"
32	9 mm	11/32"

Tagliare un'apertura rettangolare per il telaio, rispettando le misure specificate sopra.

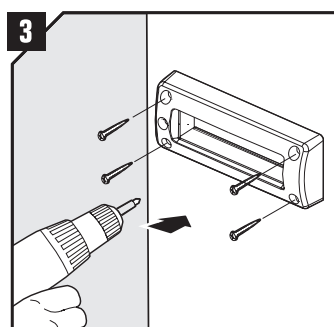
* Raccomandata la rifinitura dei fori.

Installazione di Roxtec EzEntry™ 4, 10, 16, 24 e 32

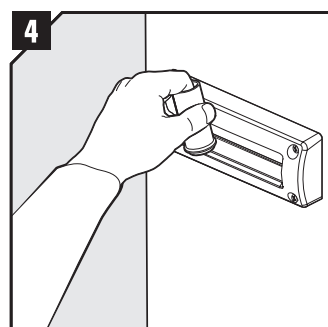
Per installare Roxtec EzEntry™ sono necessari il telaio, i moduli, il lubrificante e gli accessori di fissaggio. (Per installare EzEntry™ 16 su una struttura di spessore inferiore a 2mm o 0,079 pollici, è necessario anche un controtelaio). Gli unici strumenti necessari sono le chiavi a brugola incluse nel kit. Per l'installazione di Roxtec EzEntry™ 4 mini, vedi pag.2.



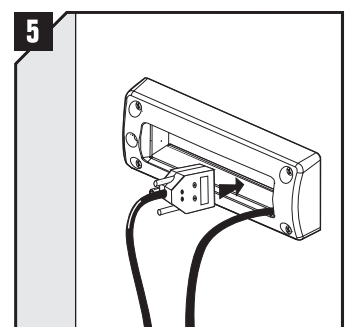
Inserire il telaio nell'apertura.



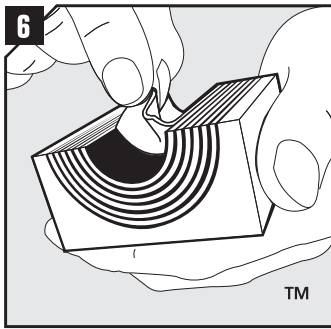
Fissare il telaio usando le viti fornite.



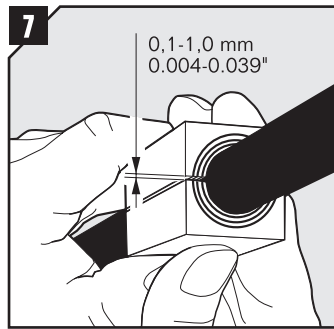
Lubrificare le superfici interne del telaio con il lubrificante Roxtec, in particolare gli angoli.



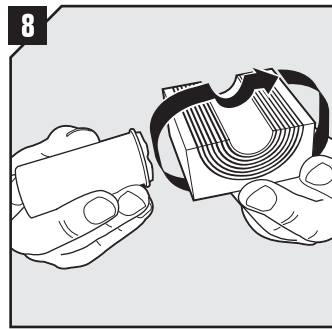
Inserire i cavi nell'apertura del telaio.



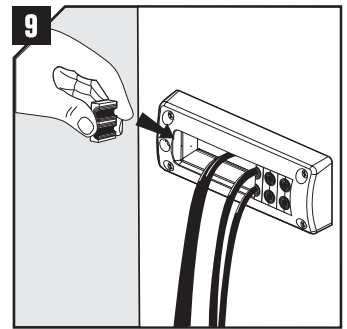
Adattare il modulo al cavo sfogliando gli strati rimovibili fino a raggiungere lo spazio mostrato in figura 7.



Lasciare uno spazio di 0.1-1.0 mm tra le due metà del modulo tenendole premute contro il cavo.

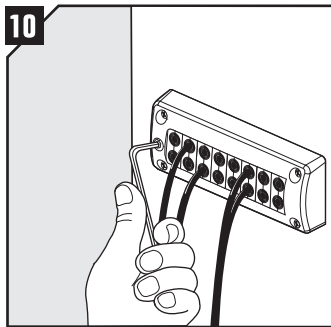


Lubrificare con cura tutti i moduli prima dell'installazione, sia le superfici interne che quelle esterne.

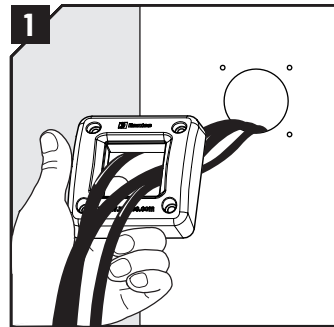


Inserire i moduli secondo lo schema di installazione.

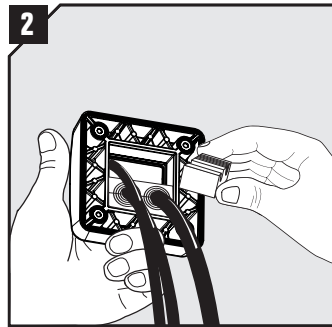
Installazione di Roxtec EzEntry™ 4 mini



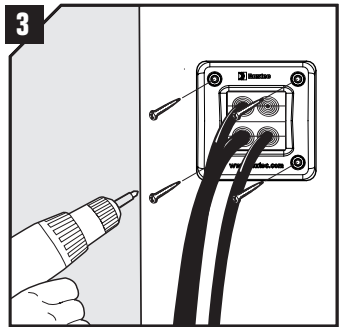
Serrare il sistema di compressione integrato con la chiave a brugola per sigillare il passaggio.*



Lubrificare la superficie interna del telaio e i moduli con il "Roxtec Assembly Gel". Inserire i cavi nell'apertura del telaio.

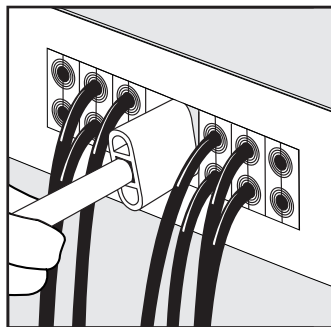


Inserire tutti i moduli dal retro del telaio e installare tutti i cavi prima di fissare il telaio alla struttura.



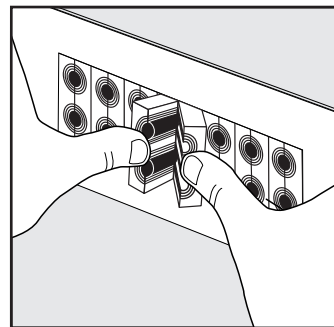
Nell' EzEntry™ 4 mini la compressione e la sigillatura avvengono serrando le viti.

Suggerimenti e consigli



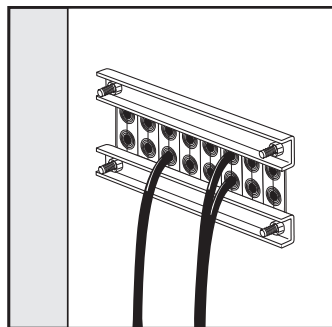
Precompressione

Se è necessario avere più spazio per installare l'ultimo modulo, utilizzare uno strumento per precomprimere i moduli nel telaio. Per informazioni sugli strumenti Roxtec per la precompressione, visita il sito www.roxtec.com/installers-section.



Inclinare i moduli

Per semplificare l'inserimento dell'ultimo modulo, inclinare le metà dei moduli e spingerli nel telaio contemporaneamente.



EzEntry™ 16, nota bene:

Per installare EzEntry™ 16 se lo spessore della parete è inferiore a 2 mm è consigliato l'utilizzo di un controtelaio. Posizionare i due componenti dalla parte opposta della parete sul lato lungo del telaio.

*Valori di coppia consigliati per la vite di compressione

EzEntry 4 = 3-5 Nm
 EzEntry 10 = 5-7 Nm
 EzEntry 16 = 5-7 Nm
 EzEntry 24 = 5-7 Nm
 EzEntry 32 = 5-7 Nm

Per eventuale disinstallazione e/o modifiche

Eseguire i passaggi in ordine inverso.

DISCLAIMER

"The Roxtec cable entry sealing system ("the Roxtec system") is a modular-based system of sealing products consisting of different components. Each and every one of the components are necessary for the best performance of the Roxtec system. The Roxtec system has been certified to resist a number of different hazards. Any such certification, and the ability of the Roxtec system to resist such hazards, is dependent on all components that are installed as a part of the Roxtec system. Thus, the certification is not valid and does not apply unless all components installed as part of the Roxtec system are manufactured by or under license from Roxtec ("authorized manufacturer"). Roxtec gives no performance guarantee with respect to the Roxtec system, unless (i) all components installed as part of the Roxtec system is manufactured by an authorized manufacturer and (ii) the purchaser is in compliance with (a), and (b), below.

(a) During storage, the Roxtec system or part thereof, shall be kept indoors in its original packaging at a temperature not exceeding +70°C/+158°F and not below -40°C/-40°F.

(b) Installation shall be carried out in accordance with Roxtec

installation instructions in effect from time to time.

The product information provided by Roxtec does not release the purchaser of the Roxtec system, or part thereof, from the obligation to independently determine the suitability of the products for the intended process, installation and/or use.

Roxtec gives no guarantee for the Roxtec system or any part thereof and assumes no liability for any loss or damage whatsoever, whether direct, indirect, consequential, loss of profit or otherwise, occurred or caused by the Roxtec systems or installations containing components not manufactured by an authorized manufacturer.

Roxtec expressly excludes any implied warranties of merchantability and fitness for a particular purpose and all other express or implied representations and warranties provided by statute or common law. User determines suitability of the Roxtec system for intended use and assumes all risk and liability in connection therewith. In no event shall Roxtec be liable for consequential, punitive, special, exemplary or incidental damages."



Roxtec International AB
 Box 540, 371 23 Karlskrona, SWEDEN
 TEL +46 455 36 67 00, FAX +46 455 820 12
 EMAIL info@se.roxtec.com, www.roxtec.com

Roxtec Italia S.r.l.
 Via Leonardo Da Vinci 25
 20060 CASSINA DE PECCHI (MI), ITALY
 TELEFONO +39 0295 9012, FAX +39 0295 901240
 EMAIL info@it.roxtec.com, www.roxtec.com